



Historic

347 Congress Street, Boston, MA 02210



Proposed

347 Congress Street, Boston, MA 02210



Existing



Proposed

347 Congress Street, Boston, MA 02210



existing windows



first mock up



second mock up



existing windows



Proposed floors B and 1



existing windows



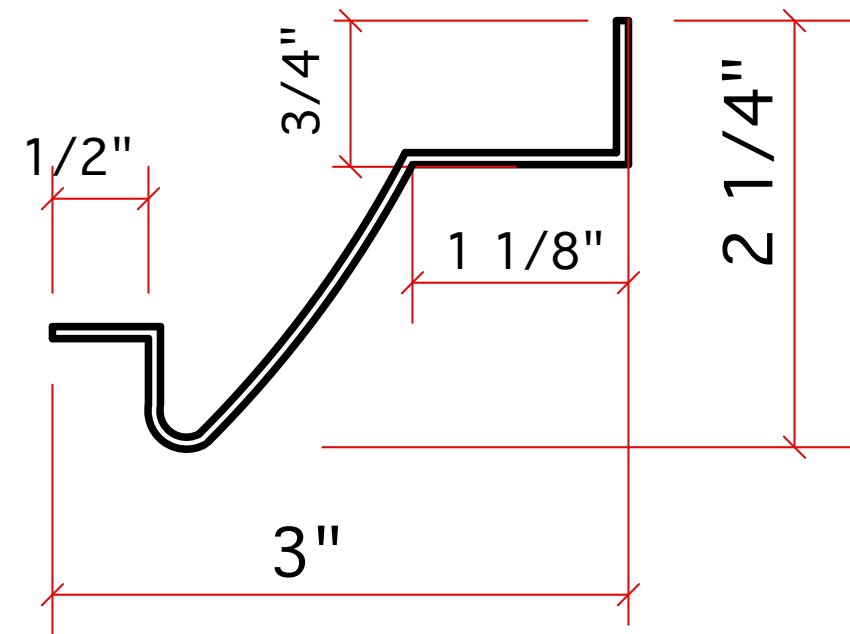
Proposed floors 2 through 6



existing window brick mold



removed brick mold for color match



Proposed custom aluminum brick mold



310-320 Summer Street



354 Congress Street



310-320 Summer street
(A Street Facade)

347 CONGRESS

BOSTON, MASSACHUSETTS

PROJECT SPECIFICATIONS AND GENERAL NOTES:

INFILL TYPES:

- 1 1" CLEAR SOLARBAN 60 ANNEALED INSULATING GLASS UNITS, LOW E #3.
- 2 1" CLEAR SOLARBAN 60 TEMPERED INSULATING GLASS UNITS, LOW E #3.
- P1 1" INSULATED ALUMINUM PANEL.

-INFILL TYPE 1, 2, P1 TO BE PER SUBMITTED SAMPLES.

-GLASS TYPE 1, 2 MAKE-UP TO BE 1/4-1/4.

-PANEL TYPE P1 MAKE -UP TO BE .040" DARK BRONZE ALUMINUM SHEET, 3/8" HIGH DENSITY TEMPERED HARDBOARD, 2.0# DENSITY POLYSTYRENE OR ISOCYANURATE, 3/8" HIGH DENSITY TEMPERED HARDBOARD, .040" DARK BRONZE ALUMINUM SHEET.

-ALL FIXED AND DOUBLE HUNG WINDOWS TO BE FACTORY GLAZED BY MAUSAU.

WINDOWS:

- MAUSAU SERIES 3100 4 1/2" DEEP SIDE LOAD THERMAL DOUBLE HUNG.
- MAUSAU SERIES 42501 4 1/2" DEEP THERMAL FIXED.

WINDOW HARDWARE AND ACCESSORIES:

- MAUSAU 842052 HEAD AND JAMB PANNING, FIELD TRIM TO SUIT.
- MAUSAU 841087 SILL PANNING, FIELD TRIM TO SUIT.
- CAM ACTION SWEEP LOCKS WITH KEEPERS X SATIN WHITE BRONZE ALLOY.-ULTRALIFT BALANCES.
- NO SCREENS

FINISHES:

- ALL EXPOSED SURFACES OF ALL WINDOW SASH, FRAMES, PANNING AND TRIM TO RECEIVE A DARK BRONZE ANODIZED FINISH.

-ALL CONCEALED ALUMINUM SURFACES TO BE MILL FINISH.

GENERAL NOTES:

1) FIELD VERIFY ALL DIMENSIONS PRIOR TO FABRICATION. ARCHITECT PLEASE VERIFY INTENT IN TERMS OF DIMENSIONS, DIVISIONS, SET-BACK DIMENSIONS, ETC.

2) SHIM AND ANCHOR FRAMES 18-24" O.C. UNLESS INDICATED OTHERWISE HEREIN OR IN THE MANUFACTURER'S INSTALLATION INSTRUCTIONS.

3) LOCATE SETTING BLOCKS AT MODULE 1/4 POINTS, U.N.O.

4) LOCATE FASTENERS FOR BRAKE SHAPES, TRIM, ETC., 18-24" O.C., FASTENERS TO BE CONCEALED WHERE POSSIBLE.

5) ALL ANCHORS/FASTENERS TO BE ZINC OR CADMIUM PLATED STEEL. FASTENERS TO BE CONCEALED WHERE POSSIBLE.

6) ALL DIMENSIONS, DETAILS, DESIGN, ETC., CONTAINED HEREIN ARE SUBJECT TO APPROVAL AND FIELD VERIFICATION.

7) WOOD BLOCKING/METAL STUD FRAMING, PLYWOOD SHEATHING TO BE FURNISHED AND INSTALLED BY OTHERS.

8) STRUCTURE MUST BE CAPABLE OF WITHSTANDING ALL LOADS IMPOSED BY THE GLAZED WALL SYSTEMS, PERIMETER CONSTRUCTION MUST ALLOW FOR ADEQUATE ANCHORAGE OF GLAZED WALL SYSTEMS.

9) HANOVER GLASS COMPANY, INC. / DESIGN DRAFT ASSOCIATES, INC. ARE NOT RESPONSIBLE FOR ANY ERRORS MADE BY OTHER TRADES THROUGH THE USE OF THESE SHOP DRAWINGS.

10) INSTALL CONTINUOUS BOND BREAKER TAPE OR PLASTIC SHIMS BETWEEN DIS-SIMILAR METALS.

11) GASKET COLOR TO BE BLACK, SEALANT COLOR TO BE SELECTED BY THE ARCHITECT FROM SUBMITTED STANDARD SEALANT COLOR OPTIONS.

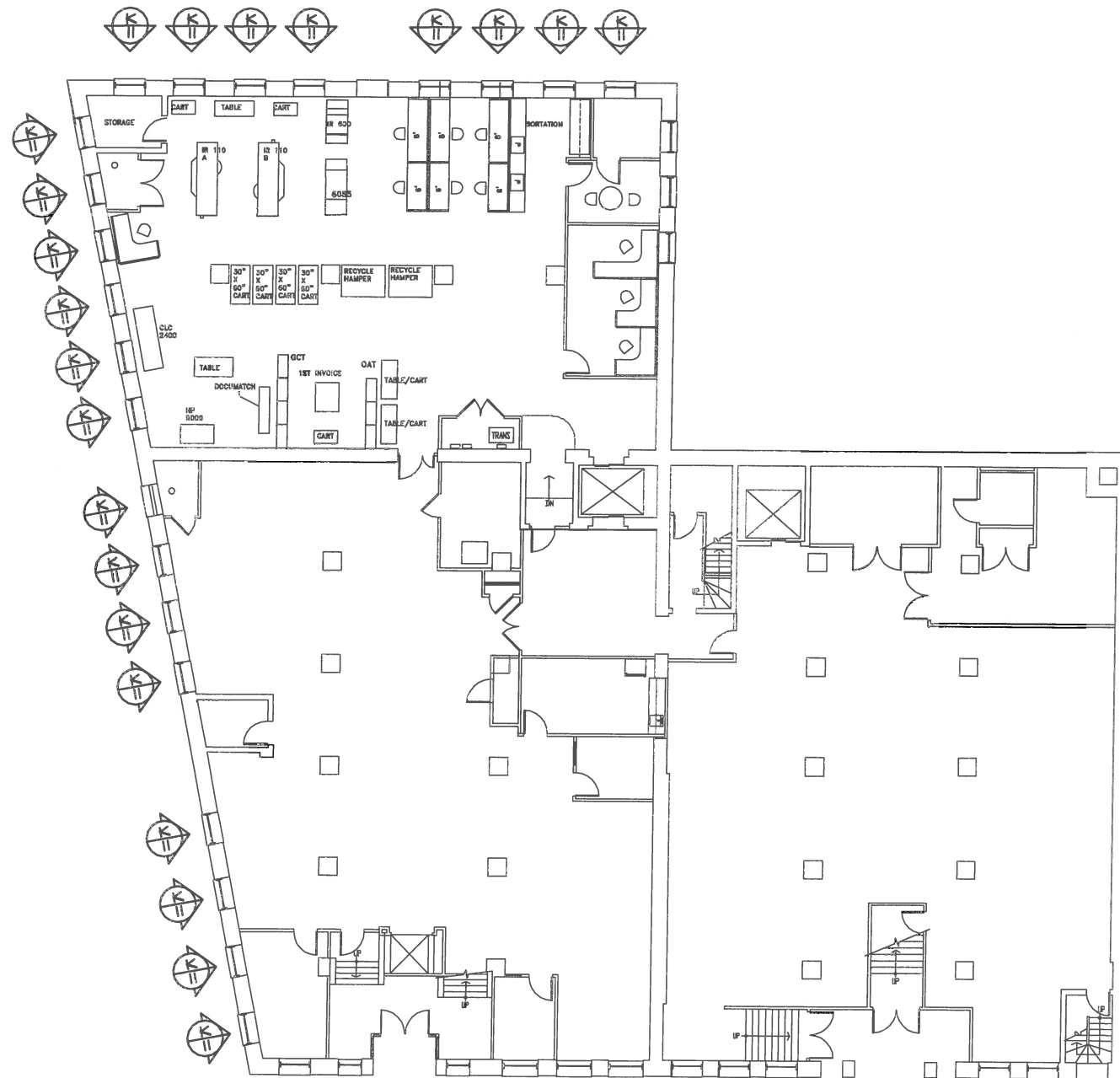
DRAWING INDEX:

- 1 TITLE SHEET, PROJECT SPECIFICATIONS, INDEX
- 2 GROUND FLOOR PLAN
- 3 FIRST FLOOR PLAN
- 4 SECOND FLOOR PLAN
- 5 THIRD FLOOR PLAN
- 6 FOURTH FLOOR PLAN
- 7 FIFTH FLOOR PLAN
- 8 SIXTH FLOOR PLAN
- 9 ELEVATIONS
- 10 ELEVATIONS
- 11 ELEVATIONS
- 12 ELEVATIONS
- 13 ELEVATIONS
- 14 ELEVATIONS
- 15 DETAILS
- 15A DETAILS
- 16 DETAILS
- 17 DETAILS
- 18 DETAILS
- 19 DETAILS

KEY TO ABBREVIATIONS:

D.O.	DOOR OPN'G.
FRM. HGT. OR FRM.	FRAME HEIGHT
WK. FT. OR W.P.	WORK POINT
DR. SIZE	DOOR SIZE
GLS. SIZE	GLASS SIZE
OPN'G.	OPENING
V.I.F.	VERIFY IN FIELD
EQ.	EQUAL
OPP.	OPPOSITE
SIM.	SIMILAR
EL. OR ELEV.	ELEVATION
DLO	DAYLIGHT OPENING
CONC.	CONCRETE
CONT.	CONTINUOUS
TBD	TO BE DETERMINED

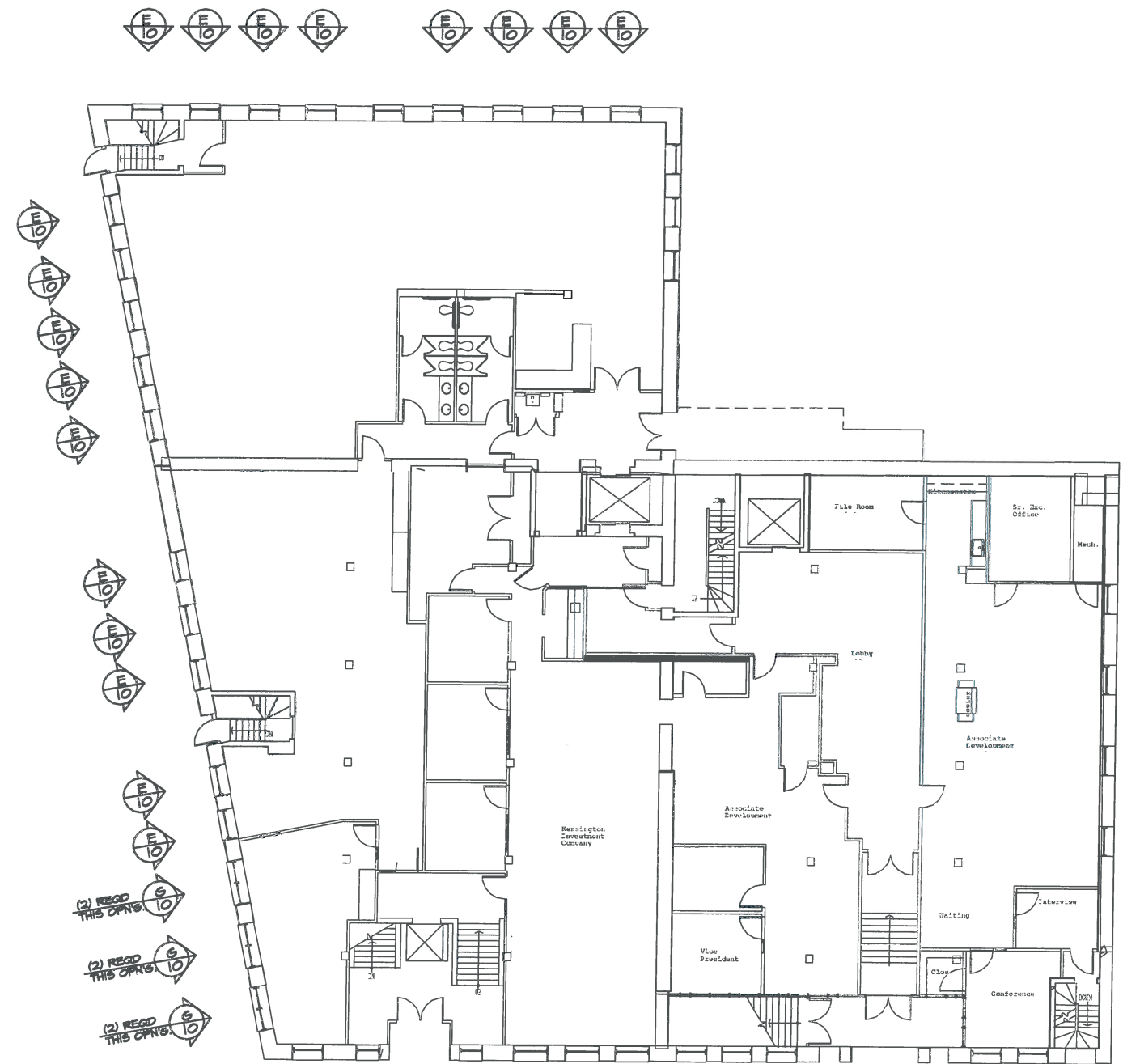
DESIGN DRAFT ASSOCIATES, INC.		
10744 SOUTH FAIRFIELD AVENUE TTS-861-8860 - VOICE		
CHICAGO, ILLINOIS 60658-1120 TTS-861-8808 - FAX		
CUSTOMER: HANOVER GLASS COMPANY, INC.		
55 CORPORATE PARK DRIVE		
PEMERKE, MA 02884 / 781-824-4242		
SCALE: N/A	APPROVED BY:	DRAWN BY: G.L. LIBREZZI
DATE: 08/26/08		REVISED:
PROJECT: 347 CONGRESS		
BOSTON, MASSACHUSETTS		
SUBJECT: TITLE SHEET		DRAWING NUMBER: 1



(2) RELOC THIS OPENING

 **GROUND FLOOR PLAN**

DESIGN DRAFT ASSOCIATES, INC.		
10744 SOUTH WAINWRIGHT AVENUE		
CHICAGO, ILLINOIS 60658-1250		
781-821-8840 - VOICE		781-821-8800 - FAX
CLIENT: HANOVER GLASS COMPANY, INC.		
88 CORPORATE PARK DRIVE		
PEPPERIDGE, MA 02204 / 781-921-4342		
SCALE: 3/8" = 1'-0"	DESIGNED BY:	DRAWN BY: G.L. LEMAY
DATE: 08/2000	REVISIONS:	
PROJECT: BJT COMMERCIAL		
BOSTON, MASSACHUSETTS		
SUBJECT: GROUND FLOOR PLAN		DRAWING SHEET
		2



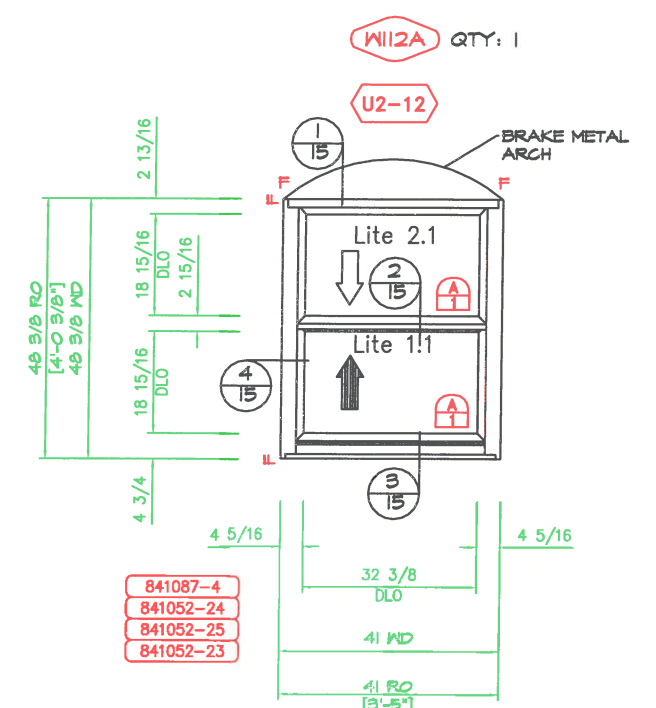
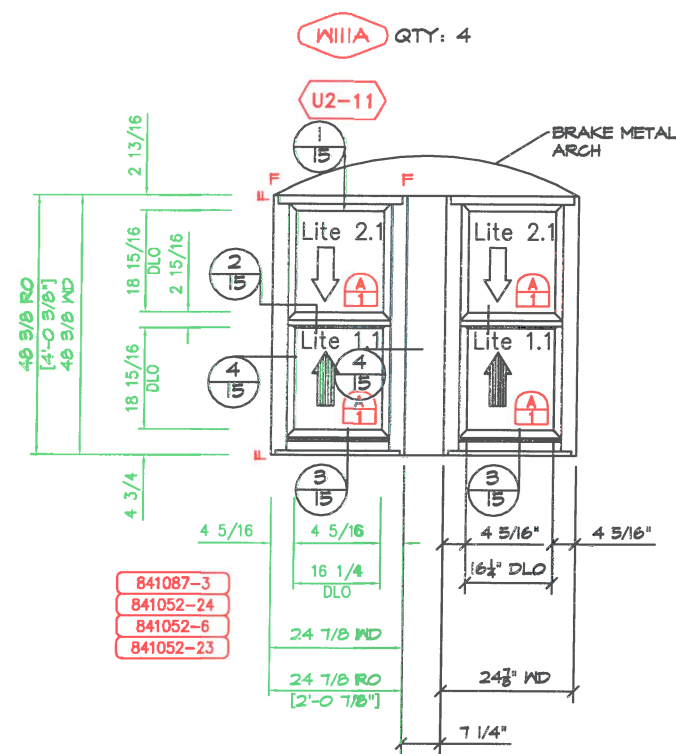
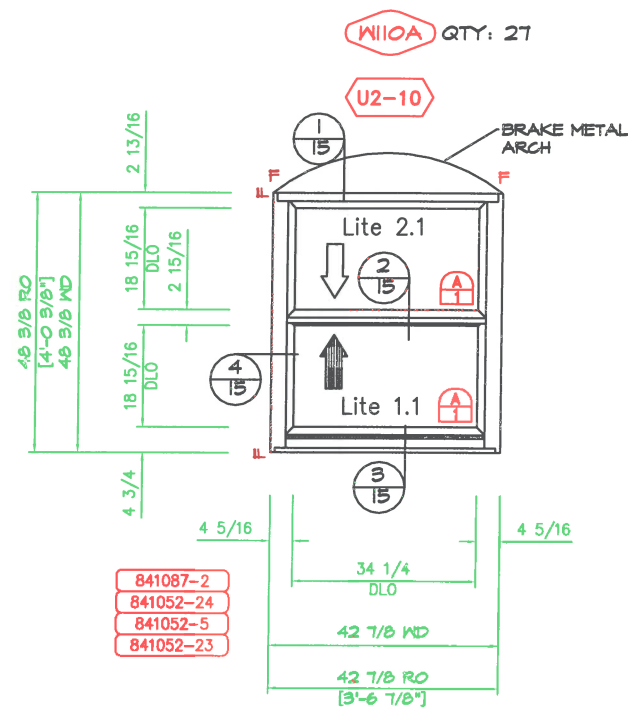
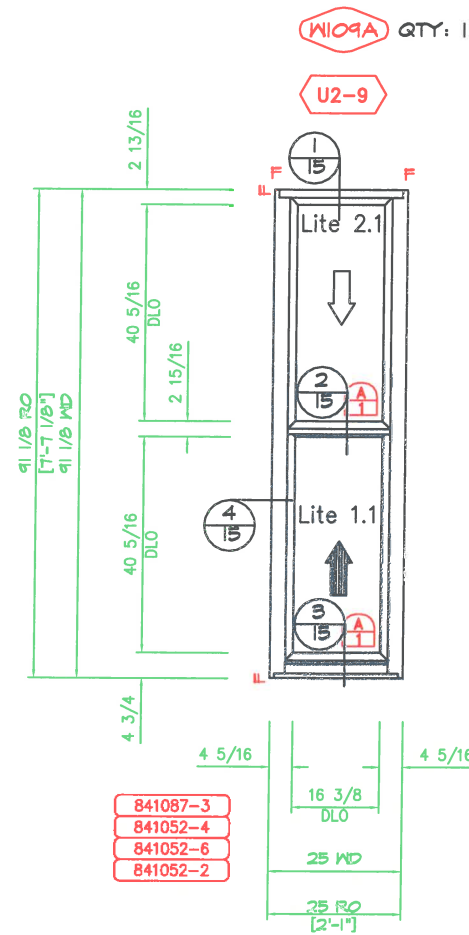
(2) RECD THIS OPNS   

(2) RECD THIS OPNS   

(2) RECD THIS OPNS   

 **FIRST FLOOR PLAN**

DESIGN DRAFT ASSOCIATES, INC.		
10741 SOUTH FAIRFIELD AVENUE		
CHICAGO, ILLINOIS 60658-1200		
TEL: 847-8850 - VOICE		TEL: 847-8850 - FAX
CLIENT: HANOVER GLASS COMPANY, INC.		
35 CORPORATE PARK DRIVE		
PERU, ILLINOIS 61351-4343		
SCALE: 1/8" = 1'-0"	APPROVED BY:	DRAWN BY: G.L. LEBLANC
DATE: 08/08/00	REVISION:	
PROJECT: BSI COMPLEX		
BOSTON, MASSACHUSETTS		
SUBJECT: FIRST FLOOR PLAN		DRAWING NUMBER
		9



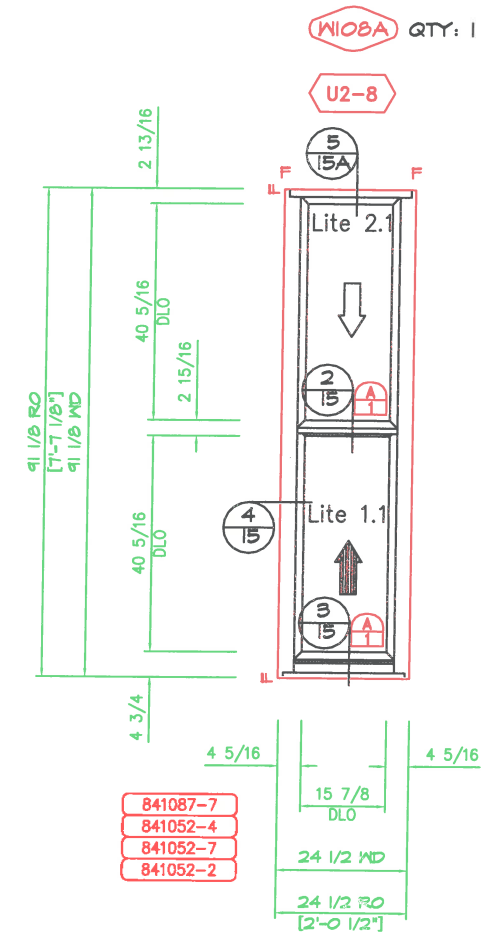
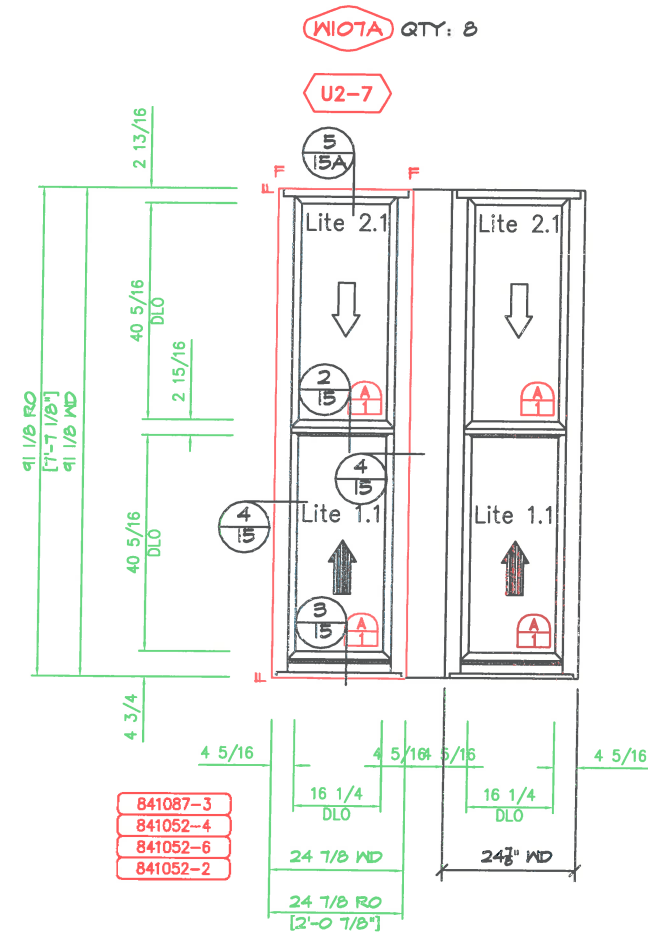
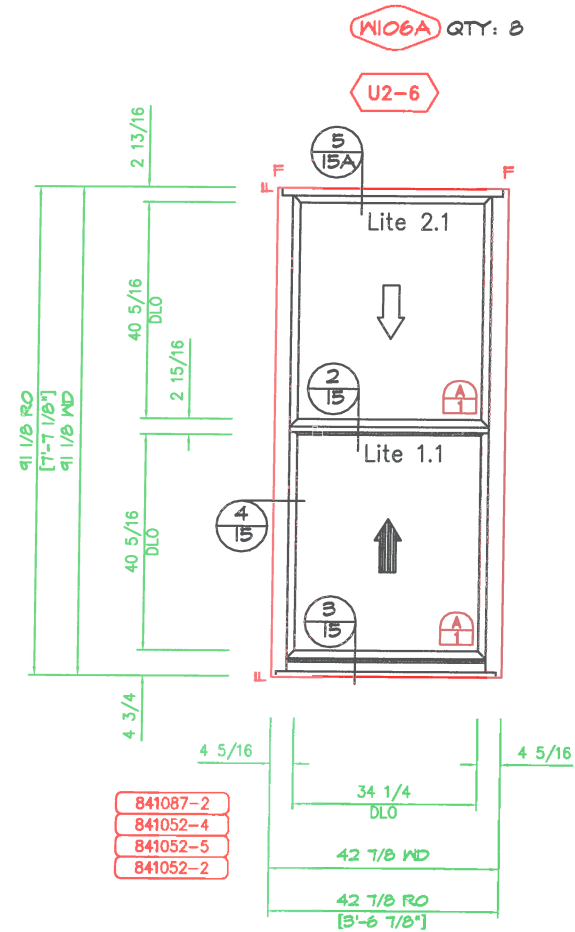
J ELEVATION - 1 THUS
-MAUSAU NDM MARK 109A

L ELEVATION - 2 THUS
-MAUSAU NDM MARK 111A (TWO ELEVATIONS = 4 NDMs)

K ELEVATION - 27 THUS
-MAUSAU NDM MARK 110A

M ELEVATION - 1 THUS
-MAUSAU NDM MARK 112A

DESIGN DRAFT ASSOCIATES, INC.			
10744 SOUTH FAIRFIELD AVENUE		TIB-881-8860 - VOICE	
CHICAGO, ILLINOIS 60628-1720		TIB-881-8809 - FAX	
CLIENT: HANOVER GLASS COMPANY, INC.			
88 CORPORATE PARK DRIVE			
PEPERUKE, MASSACHUSETTS 02354 / TEL-821-4242			
SCALE: 3/4" = 1'-0"	APPROVED BY:	DRAWN BY: SL LIBREZ	
DATE: 08/28/08		REVISION:	
PROJECT: 847 CONGRESS			
BOSTON MASSACHUSETTS			
SUBJECT: WINDOW ELEVATIONS			
			DRAWING NUMBER
			11



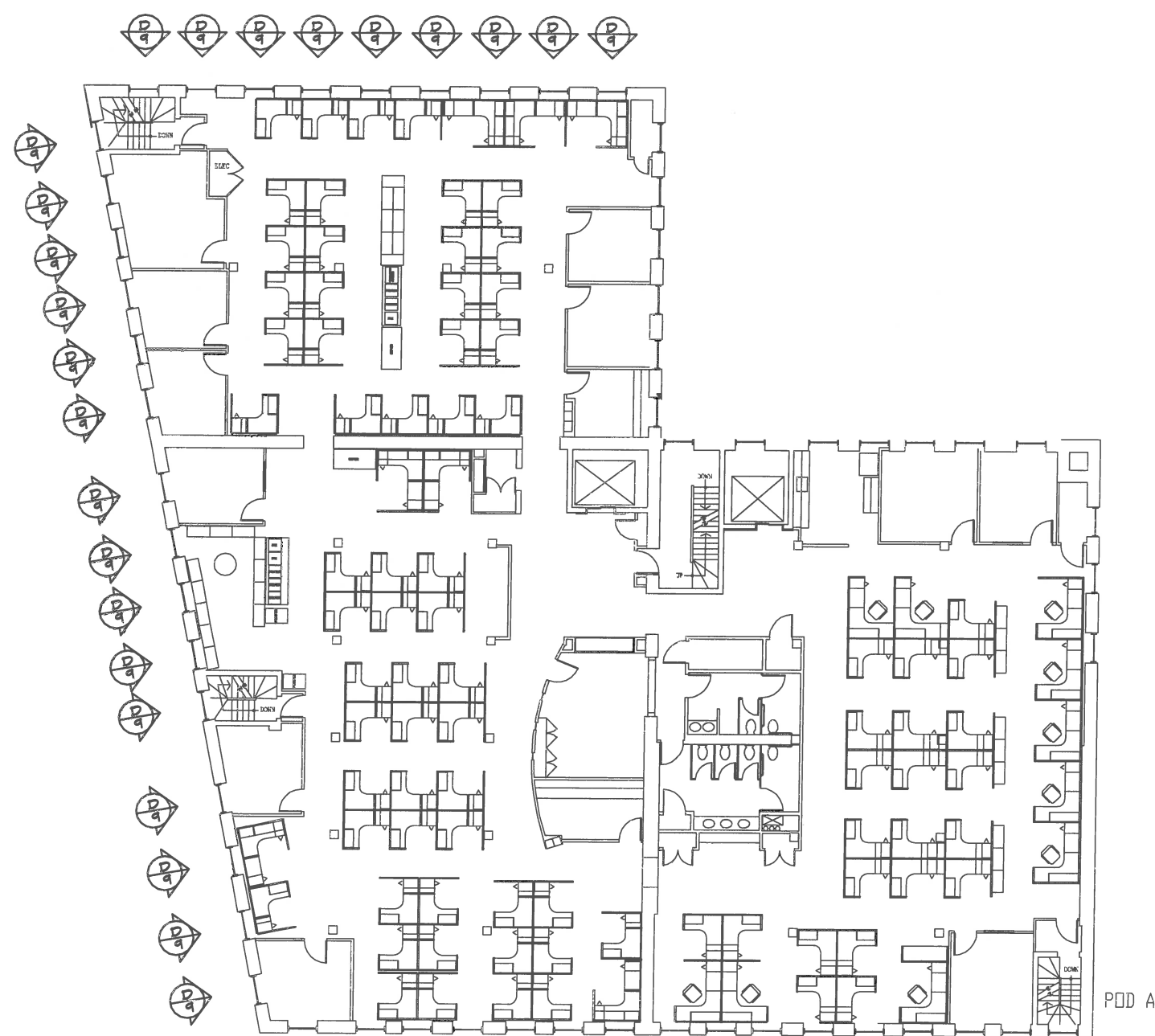
E ELEVATION - 22 THUS
-MAUSAU WDW MARK 105A


G ELEVATION - 4 THUS
-MAUSAU WDW MARK W107A (4 ELEVATIONS = 8 WDWs)

F ELEVATION - 8 THUS
-MAUSAU WDW MARK W106A

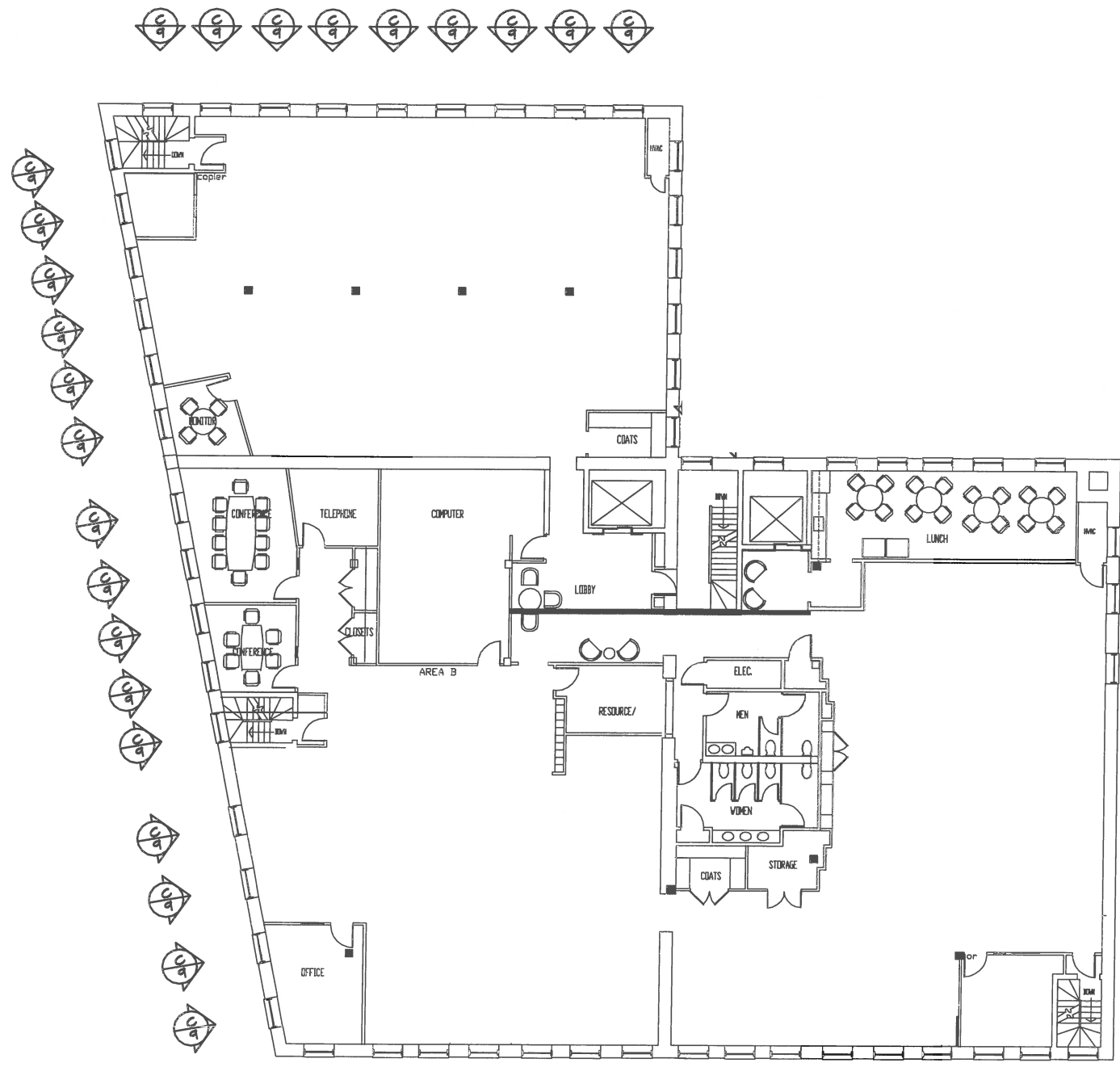
H ELEVATION - 1 THUS
-MAUSAU WDW MARK W108A

DESIGN DRAFT ASSOCIATES, INC.			
10744 SOUTH FAIRFIELD AVENUE		778-881-8860 - VOICE	
CHICAGO, ILLINOIS 60658-1120		778-881-8808 - FAX	
CLIENT: HANOVER GLASS COMPANY, INC.			
55 CORPORATE PARK DRIVE			
PEPPERIDGE, MASSACHUSETTS 02354 / 781-921-4242			
SCALE: 3/4" = 1'-0"	APPROVED BY:	DRAWN BY: G. LIBRETTI	
DATE: 08/28/2008		REVISED:	
PROJECT: 847 CONGRESS			
BOSTON MASSACHUSETTS			
SUBJECT: WINDOW ELEVATIONS			DRAWING NUMBER
			10




SECOND FLOOR PLAN

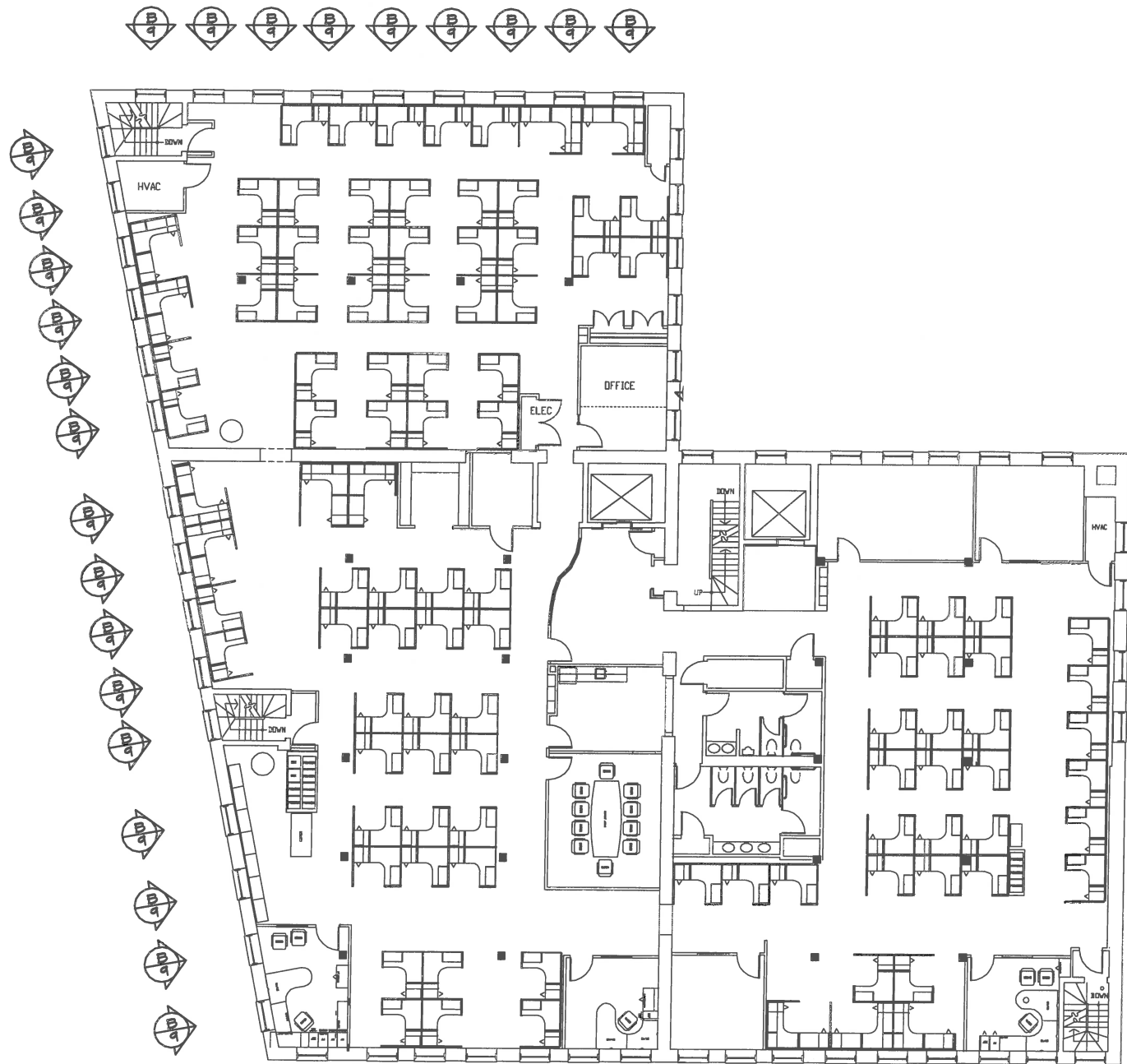
DESIGN DRAFT ASSOCIATES, INC.	
10744 SOUTH FARMFIELD AVENUE	
CHICAGO, ILLINOIS 60628-1220	
CLIENT: HANOVER GLASS COMPANY, INC.	
88 CORPORATE PARK DRIVE	
PERU, MA 02874 / TEL: 978-221-4342	
SCALE: 3/8" = 1'-0"	DATE: 01/11/01
DRAWN BY: J. L. LEBLANC	CHECKED BY: J. L. LEBLANC
PROJECT: 847 COMMERCIAL	LOCATION: BOSTON, MASSACHUSETTS
SUBJECT: SECOND FLOOR PLAN	SHEET NUMBER: 4




C D E F G H I J K L M N O P Q

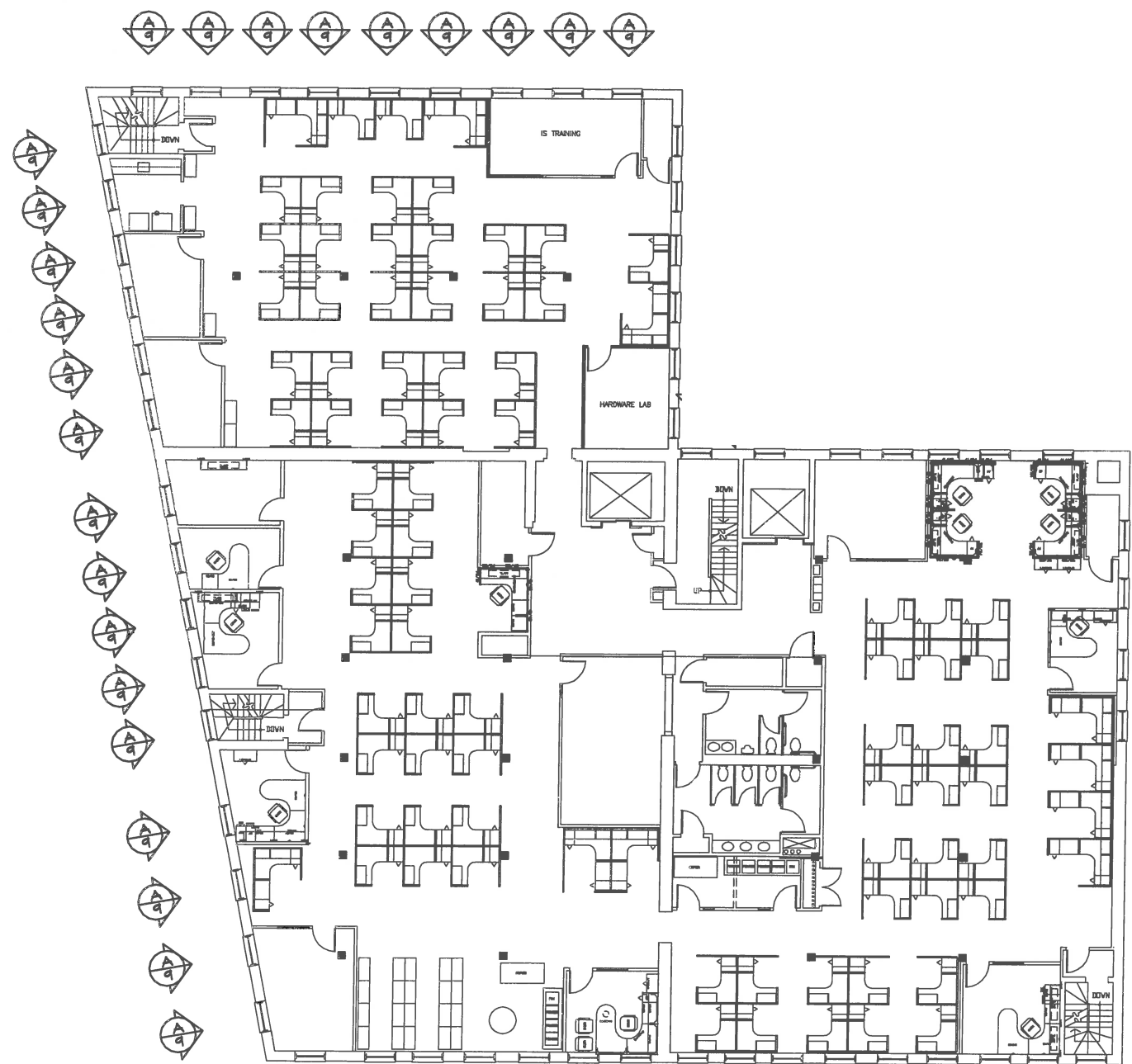
 **THIRD FLOOR PLAN**

DESIGN DRAFT ASSOCIATES, INC.		10741 SOUTH FAIRFIELD AVENUE		TEL: 881-8850 - VOICE	
CHICAGO, ILLINOIS 60658-1230				TEL: 881-2600 - FAX	
CLIENT: HANOVER GLASS COMPANY, INC.		35 CORPORATE PARK DRIVE		FERRISBURGH, NY 12524 / TEL: 509-4342	
SCALE: 3/8" = 1'-0"	DATE: 05/20/93	APPROVED BY:	DESIGNED BY: J.L. LEBLANC	DRAWN BY: J.L. LEBLANC	
PROJECT: B21 CONGRESS		BOSTON, MASSACHUSETTS		SHEET NUMBER	
SUBJECT: THIRD FLOOR PLAN				5	



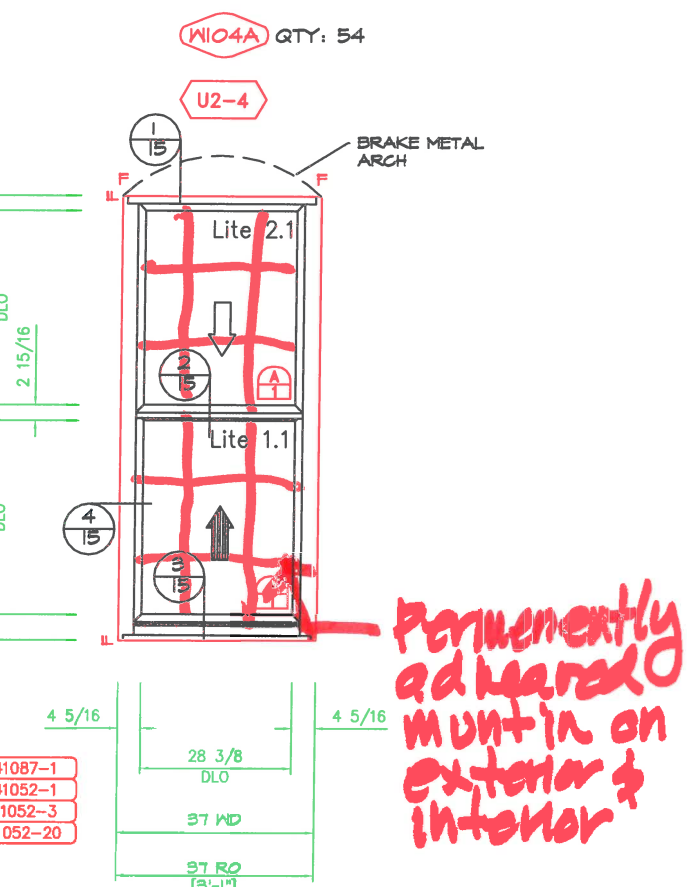
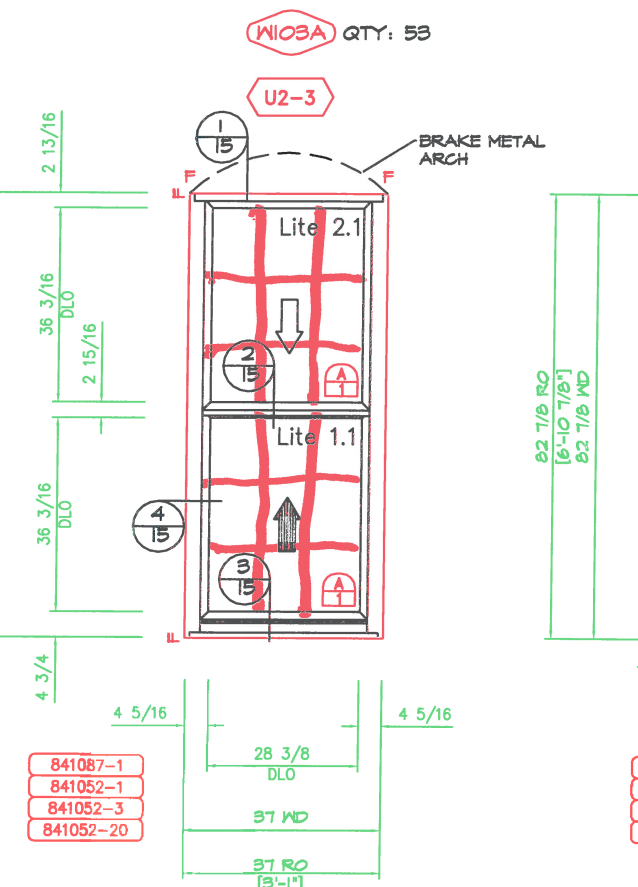
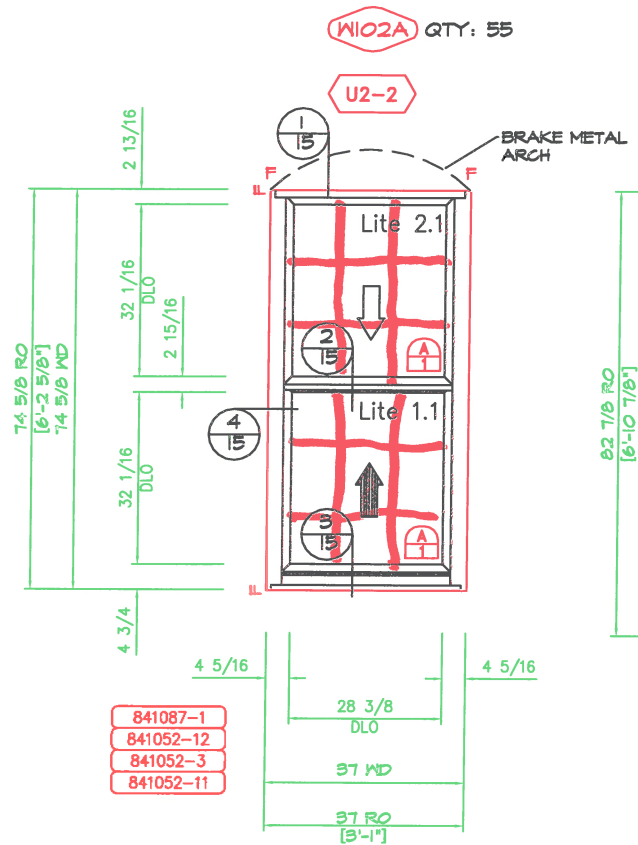
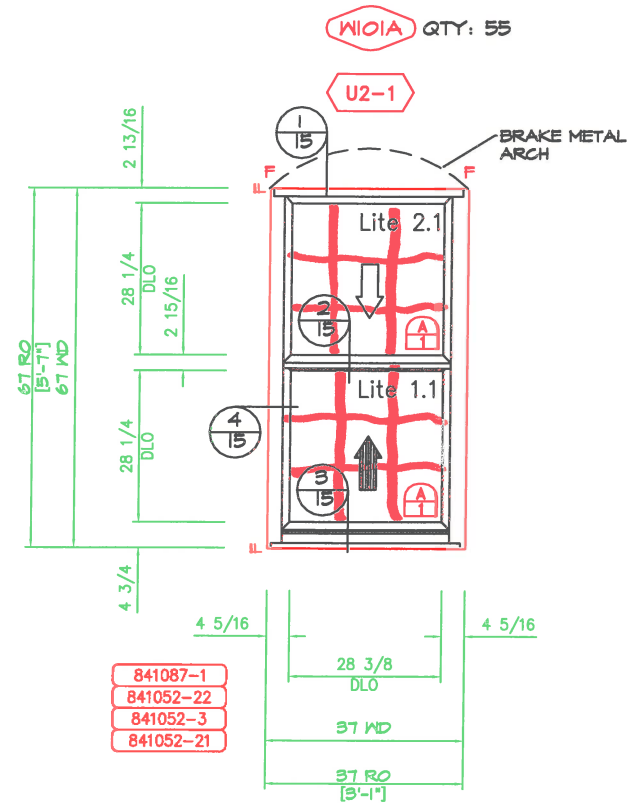

FOURTH FLOOR PLAN

DESIGN DRAFT ASSOCIATES, INC.		
10744 SOUTH FAIRFIELD AVENUE		
CHICAGO, ILLINOIS 60658-1330		
781-581-3880 - VOICE		781-581-3808 - FAX
CLIENT: HANOVER GLASS COMPANY, INC.		
85 CORPORATE PARK DRIVE		
FERNDEN, MA 02341 / 781-801-4242		
SCALE: 1/8" = 1'-0"	APPROVED BY:	DRAWN BY: EL LEMUS
DATE: 08/20/08		REVISION:
PROJECT: BTI CONGRESS		
BOSTON, MASSACHUSETTS		
SUBJECT: FOURTH FLOOR PLAN		DRAWING NUMBER
		6



FIFTH FLOOR PLAN

DESIGN DRAFT ASSOCIATES, INC.	
10744 SOUTH FARMFIELD AVENUE	TEL: 847-8840 - VOICE
CHICAGO, ILLINOIS 60619-1120	TEL: 847-8840 - FAX
CLIENT: HANOVER SLABS COMPANY, INC.	
55 CORPORATE PARK DRIVE	
PENSACOLA, FLA 32504 / TEL: 904-434-4343	
SCALE: 1/8" = 1'-0"	APPROVED BY:
DRAWN BY: J. L. LEECH	DATE: 11/11/03
PROJECT: BMT CONGRESS	REVISION:
BOSTON, MASSACHUSETTS	
SUBJECT: FIFTH FLOOR PLAN	SHOWN SHEET:
	7



*Permanently adhered
mount on
exterior &
interior*

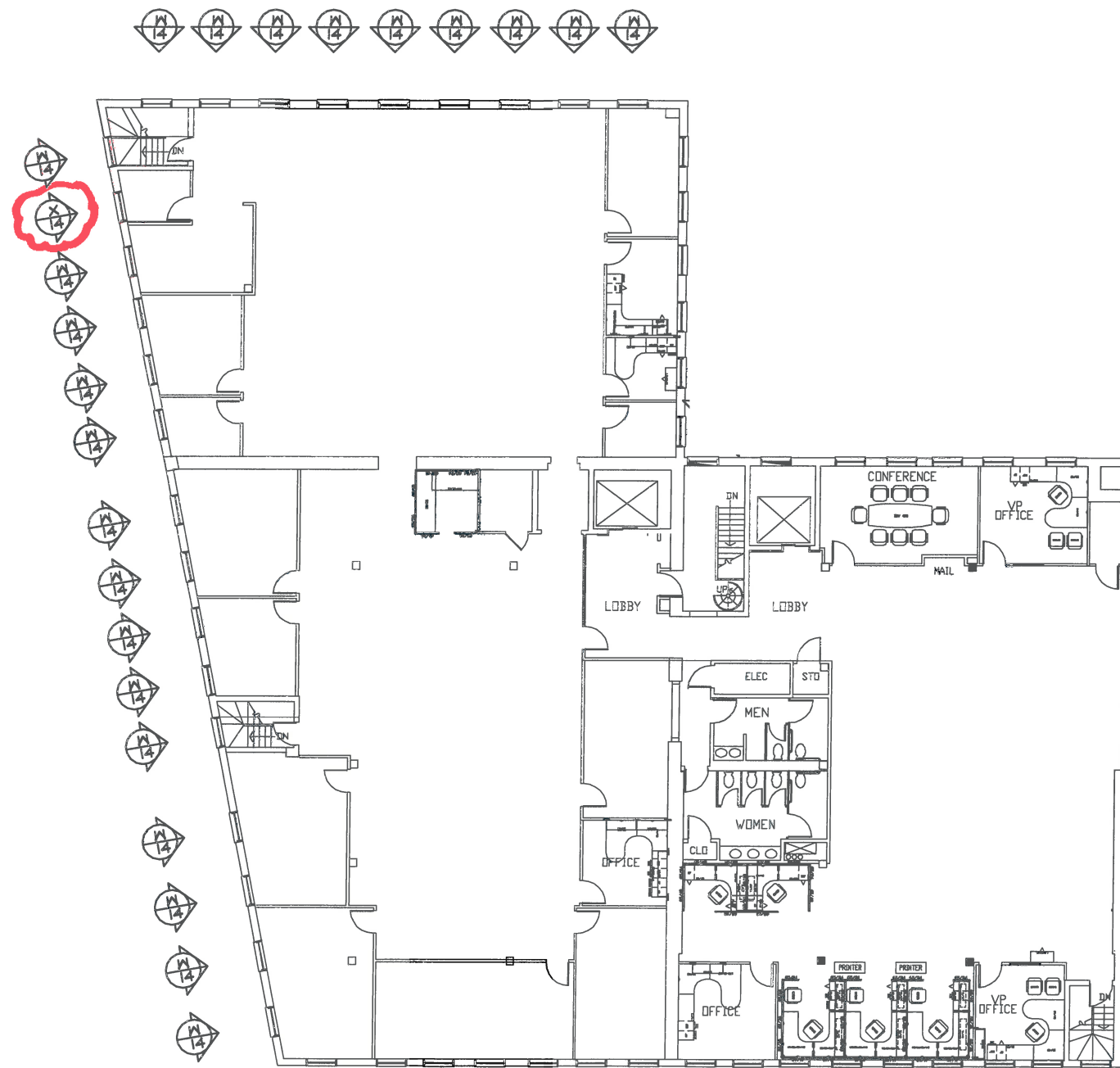
A ELEVATION - 55 THUS
-MAUSAU WDW MARK U101A


C ELEVATION - 53 THUS
-MAUSAU WDW MARK U103A

B ELEVATION - 55 THUS
-MAUSAU WDW MARK U102A

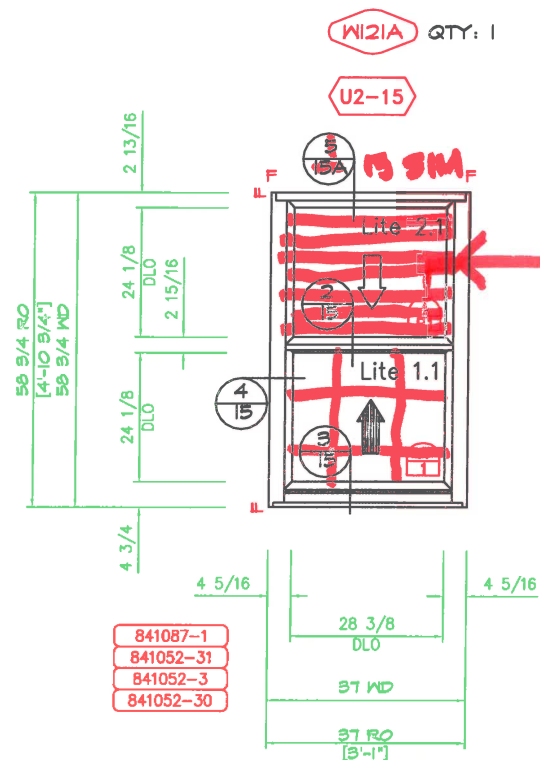
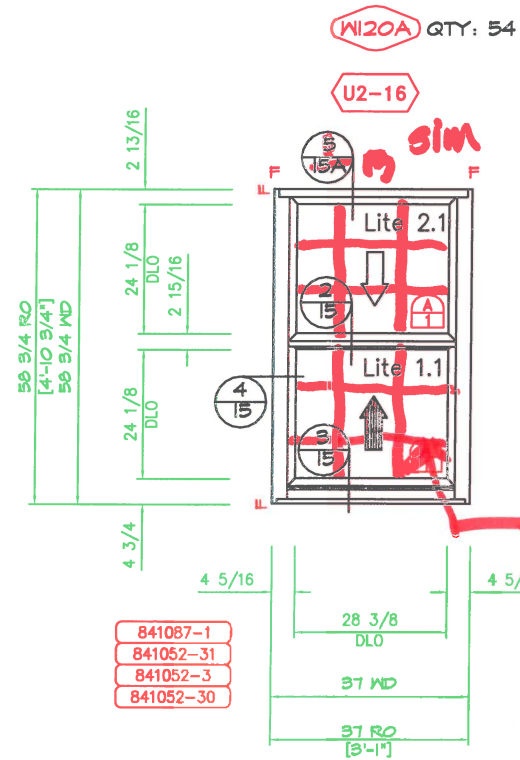
D ELEVATION - 54 THUS
-MAUSAU WDW MARK U104A

DESIGN DRAFT ASSOCIATES, INC.		
10749 SOUTH FAIRFIELD AVENUE		708-881-8860 - VOICE
CHICAGO, ILLINOIS 60658-1120		708-881-8808 - FAX
CLIENT: HANOVER GLASS COMPANY, INC.		
55 CORPORATE PARK DRIVE		
PEMBROKE, MASSACHUSETTS 02551 / 781-824-4242		
SCALE: 3/4" = 1'-0"	APPROVED BY:	DRAWN BY: OL. LIBREZZI
DATE: 02/28/2006		REVISION:
PROJECT: 847 CONGRESS		
BOSTON MASSACHUSETTS		
SUBJECT: WINDOW ELEVATIONS		DRAWING NUMBER
		9




SIXTH FLOOR PLAN

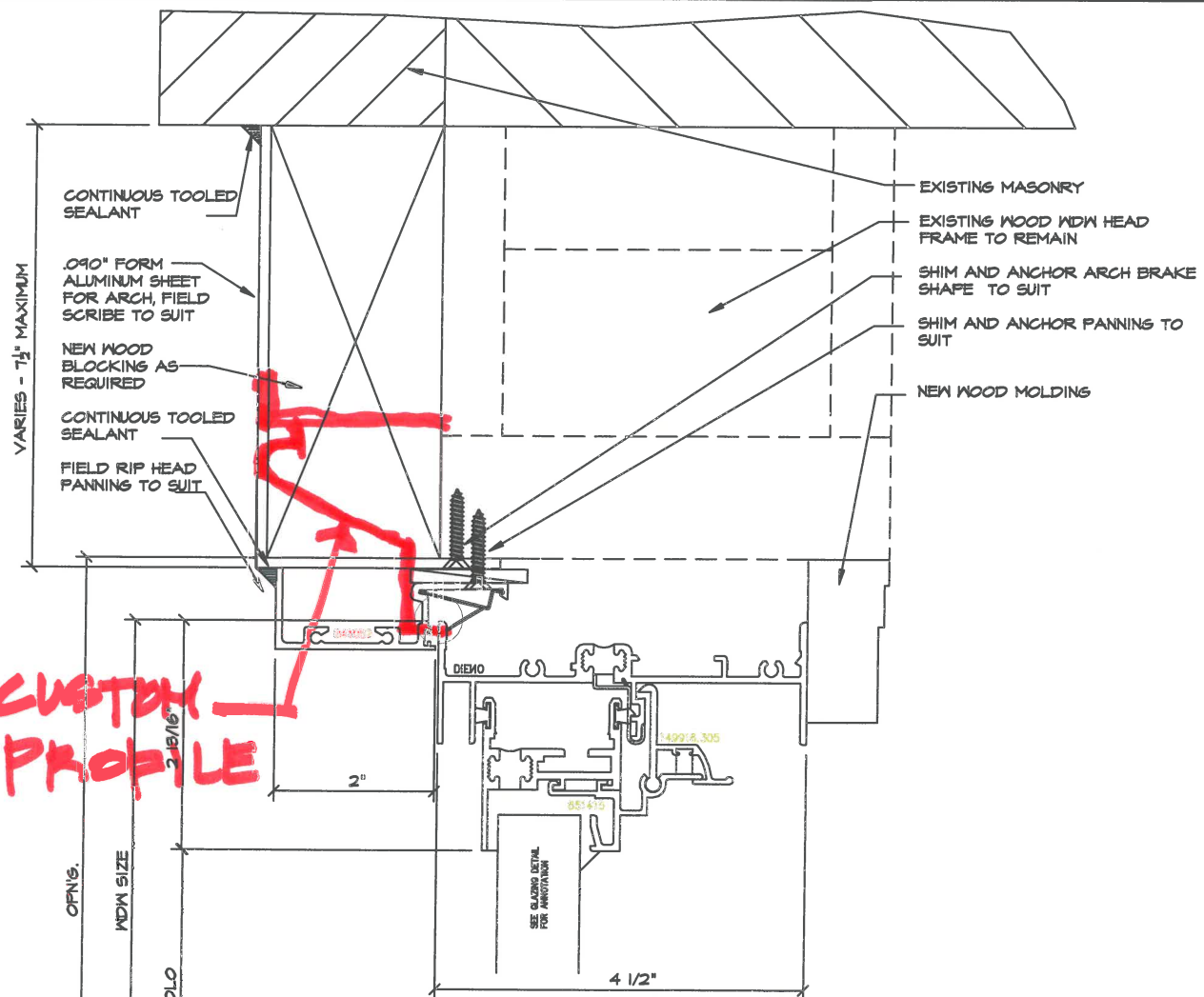
DESIGN DRAFT ASSOCIATES, INC.		
1741 SOUTH HAWFIELD AVENUE		TEL: 861-8880 - VOICE
CHICAGO, ILLINOIS 60645-1250		TEL: 861-8600 - FAX
CLIENT: HANOVER GLASS COMPANY, INC.		
88 CORPORATE PARK DRIVE		
FERRISBURGH, VA 22031 / TEL: 804-4342		
SCALE: 1/8" = 1'-0"	APPROVED BY:	DRAWN BY: EL LEMME
DWG. NUMBER:	DATE:	REVISION:
PROJECT: SET CONGRESS		
BOSTON, MASSACHUSETTS		
SUBJECT: SIXTH FLOOR PLAN		DRAWING NUMBER
		8



W ELEVATION - 54 THUS
MAUSAU WDW MARK W120A

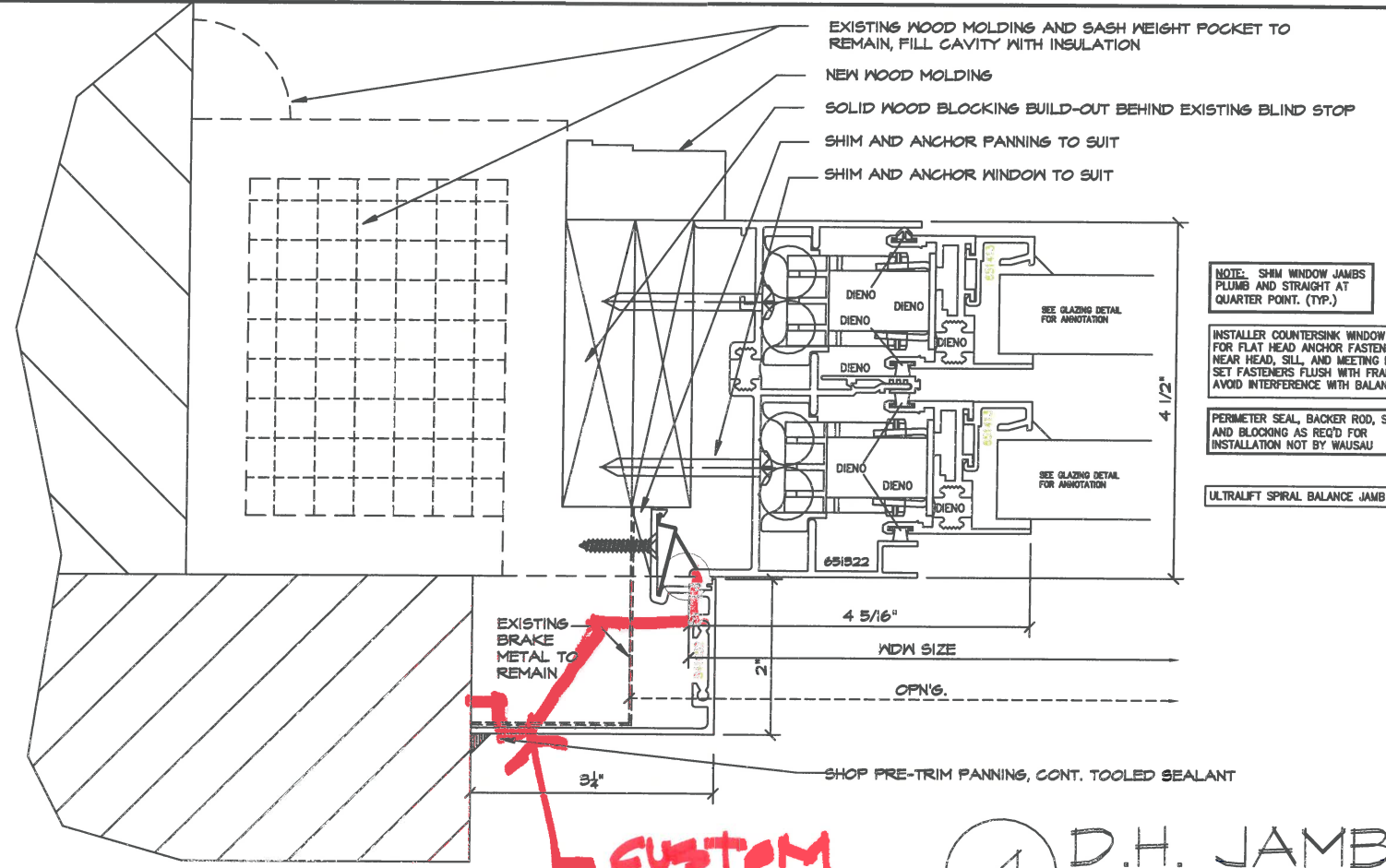
X ELEVATION - 1 THUS
MAUSAU WDW MARK W121A

DESIGN DRAFT ASSOCIATES, INC. 10749 SOUTH FAIRFIELD AVENUE CHICAGO, ILLINOIS 60658-1120		
783-881-8860 - VOICE		783-881-8863 - FAX
CLIENT: HANOVER GLASS COMPANY, INC. 55 CORPORATE PARK DRIVE PEMBROKE, MASSACHUSETTS 02859 / 781-829-4242		
SCALE: 3/4" = 1'-0"	APPROVED BY:	DRAWN BY: G.L. LIBREZZI
DATE: 08/24/2008		REVISED:
PROJECT: 847 CONGRESS BOSTON MASSACHUSETTS		
SUBJECT: WINDOW ELEVATIONS		DRAWING NUMBER 14



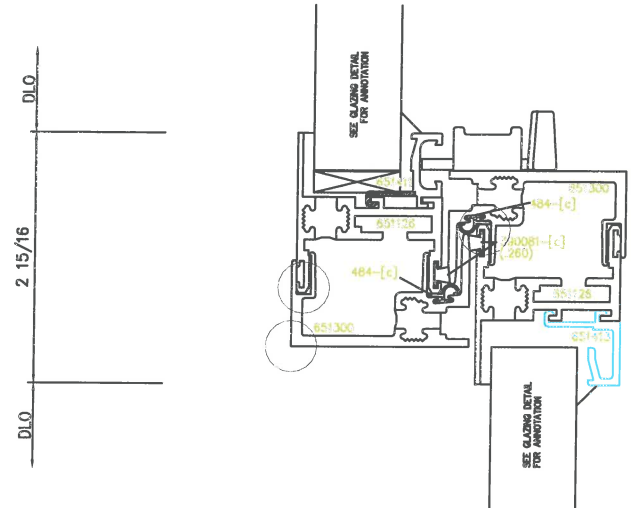
1 D.H. HEAD
WAUSAU DETAIL D7

CUSTOM PROFILE

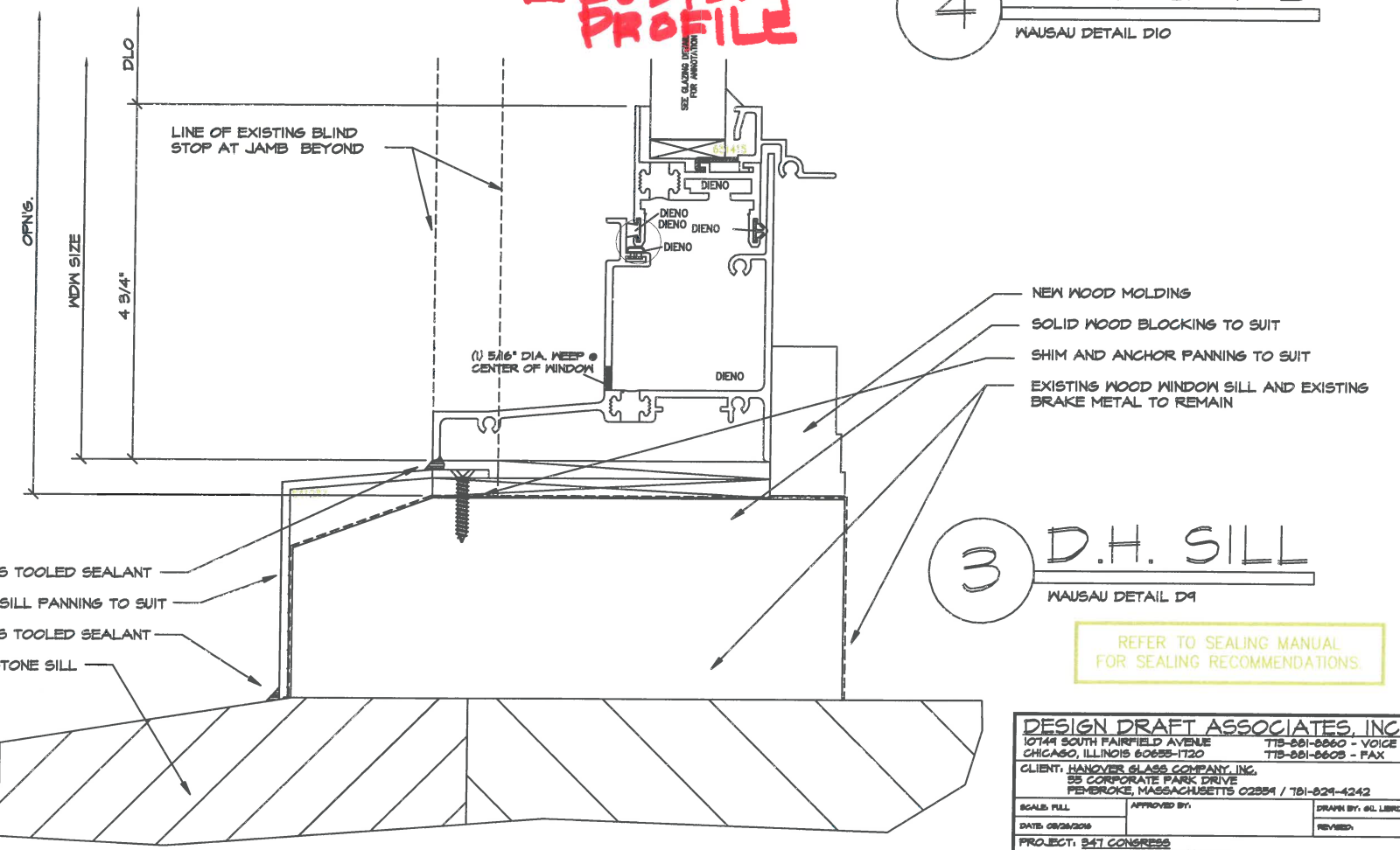


4 D.H. JAMB
WAUSAU DETAIL D10

CUSTOM PROFILE



2 D.H. MTG RAIL
WAUSAU DETAIL D8



3 D.H. SILL
WAUSAU DETAIL D9

CUSTOM PROFILE

REFER TO SEALING MANUAL FOR SEALING RECOMMENDATIONS.

NOTE: SHIM WINDOW JAMBS PLUMB AND STRAIGHT AT QUARTER POINT. (TYP.)
INSTALLER COUNTERSINK WINDOW JAMBS FOR FLAT HEAD ANCHOR FASTENERS NEAR HEAD, SILL, AND MEETING RAIL. SET FASTENERS FLUSH WITH FRAME TO AVOID INTERFERENCE WITH BALANCES
PERIMETER SEAL, BACKER ROD, SHIMS, AND BLOCKING AS REQ'D FOR INSTALLATION NOT BY WAUSAU
ULTRALIFT SPIRAL BALANCE JAMB SHOWN.

DESIGN DRAFT ASSOCIATES, INC. 10744 SOUTH FAIRFIELD AVENUE CHICAGO, ILLINOIS 60658-1120		
715-861-8660 - VOICE		715-861-8603 - FAX
CLIENT: HANOVER GLASS COMPANY, INC. 55 CORPORATE PARK DRIVE PEVEROKE, MASSACHUSETTS 02554 / 781-824-4242		
SCALE: FULL	APPROVED BY:	DRAWN BY: G.L. LIBREZI
DATE: 02/26/2016		REVISED:
PROJECT: 847 CONGRESS BOSTON, MASSACHUSETTS		
SUBJECT: DETAILS		DRAWING NUMBER 15