

DESIGN RATIONALE



Location: Joe Moakley Park, 1005 Columbia Road, Boston, MA

Team Summary:

Chris Cassani (Project Manager) and Kate Roosa (Engineer),
Concept Designers
Ross Elliot and Mike Gustafson, Graphic Designers
Nadine Hughes, GIS Support

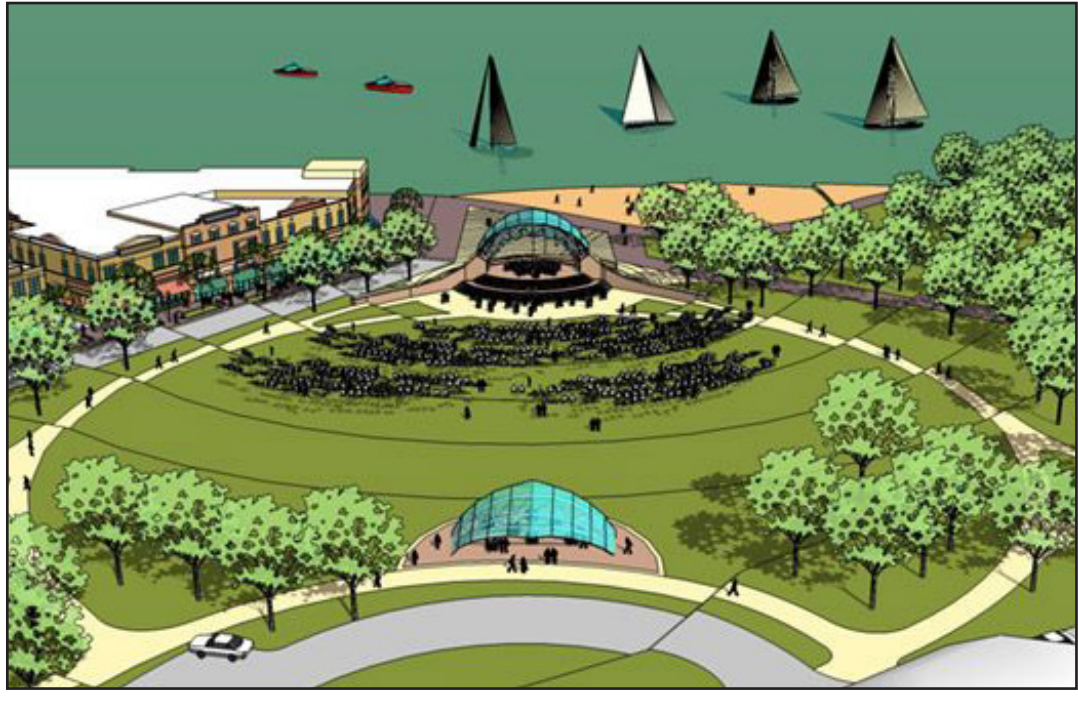
Our ideas for Moakley Park center around a desire to make the park more welcoming, more functional and more ready for the impacts of rising seas and climate change. This park, while enormous in size, does not offer a diversity of activities. There are no nooks, few trees (albeit majestic mature trees), and it feels detached from the waterfront, despite the fact that it is located so close to it. On a recent site visit, the dis-connectivity of the park to its surroundings struck us as something that needs to change.

The overarching themes we try to accomplish in our proposal is to group active recreation together in the southern half of the park, preserve certain well-used fixed infrastructure in various places in the park, and create a truly unique, environmentally conscientious design in the north half of the park.

The Grand Lawn envisioned in the northeast quadrant is a massive space, elevated and graded to offer sweeping views of the ocean and Boston skyline. There is no designed space for large civic gatherings at Moakley Park; the creation of the Grand Lawn solves that in spectacular fashion. We propose a stormwater retention pond in the middle of the park that can also double as Southie's pond hockey headquarters in the wintertime. A community garden and picnic orchard area creates a sense of privacy and spot for contemplation amidst the hustle and bustle of such a congested area.

The piece de resistance is the dune over Day Boulevard. It is an outside the box idea that adds acres to the park, creates storm resilience, and links the park together with Carson Beach.

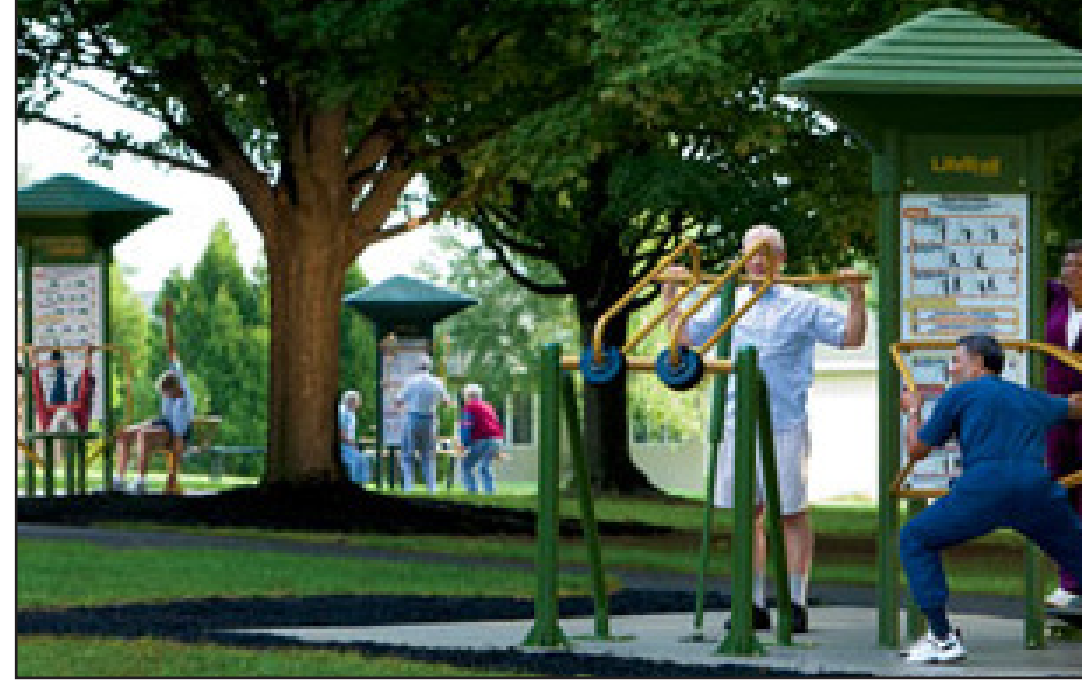
Carson Beach Lawn



Situated at the northeastern end of the park, an elevated lawn with outdoor stage will help add dimension to the park, serve as a barrier to slow wave inundation and provide an elevated vantage point for beach and skyline views, not to mention great lounging and performance opportunities.

(T: RDG Planning & Design, B: McGrath Amphitheater, Cedar Rapids, IA)

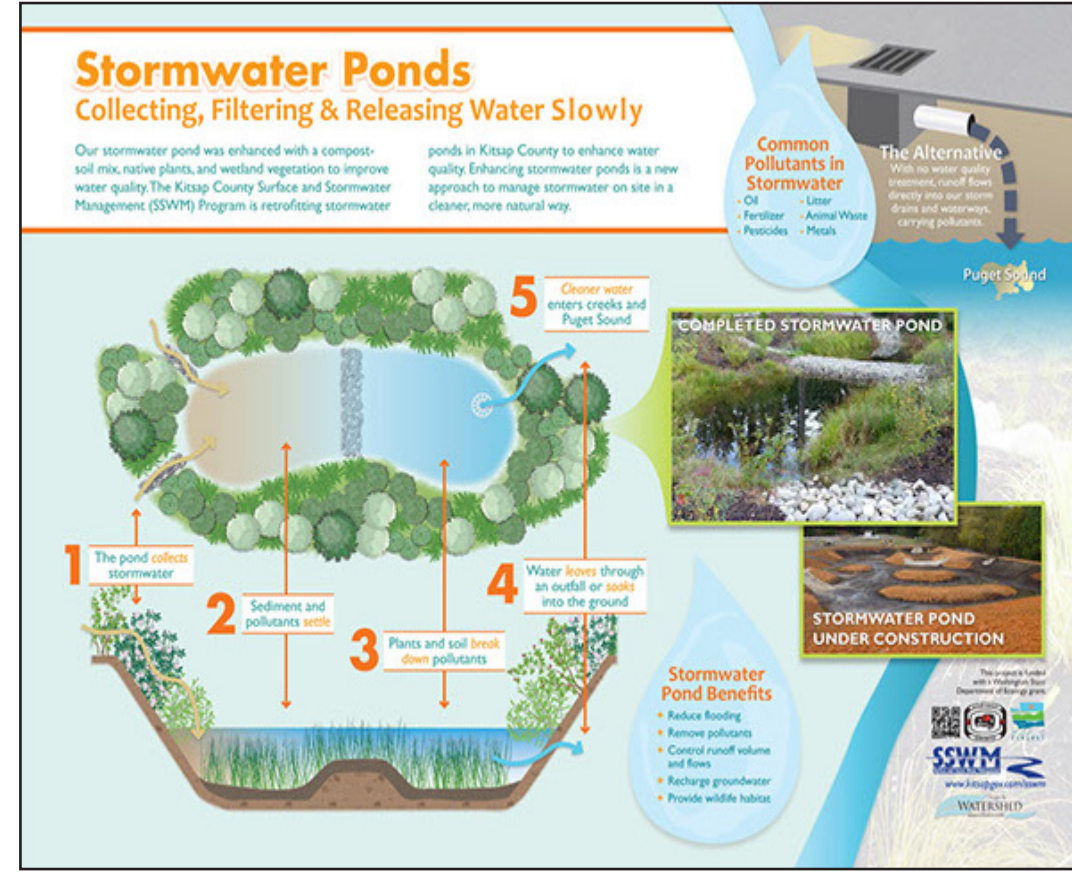
Enhanced Courts



Create an enhanced environment for tennis, basketball and pickleball. By adding lights, 2 tennis courts and a pickleball area geared toward senior citizens, we aim to make this section of the park a vibrant, well-used asset from March through November.

(Photos: All About Pickleball, Playworld®)

Interpretive Infrastructure



Cleverly disguised as beautiful park feature, this bio-retention pond will serve both form and function as a low-impact stormwater device. Pathways around the pond will include interpretive infrastructure displays to point out how the North Dorchester CSO Tunnel and Columbia Road Headworks Facility (nearby MWRA Facilities) keep Carson Beach clean and protect public health in the community.

(T: The Watershed Company Interpretive Sign, B: Kitsap County, WA Implementation)

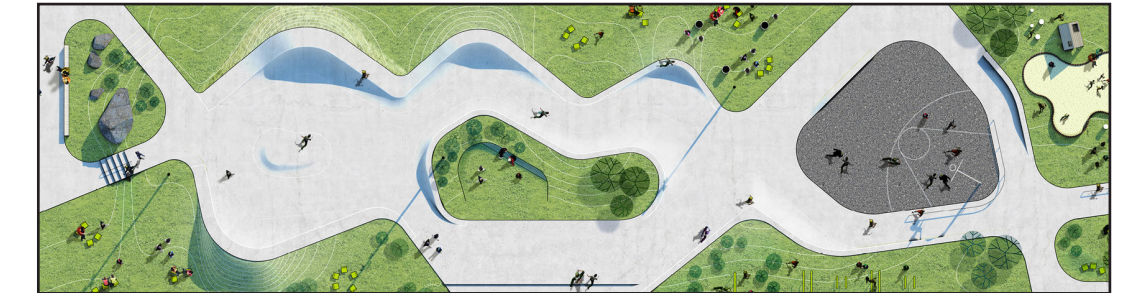
Carson Dunes



To complete the essence of the Harborwalk, creating an artificial dune in the vicinity of William J. Day Drive will add park-to-beach connectivity and provide a first defense barrier to wave action.

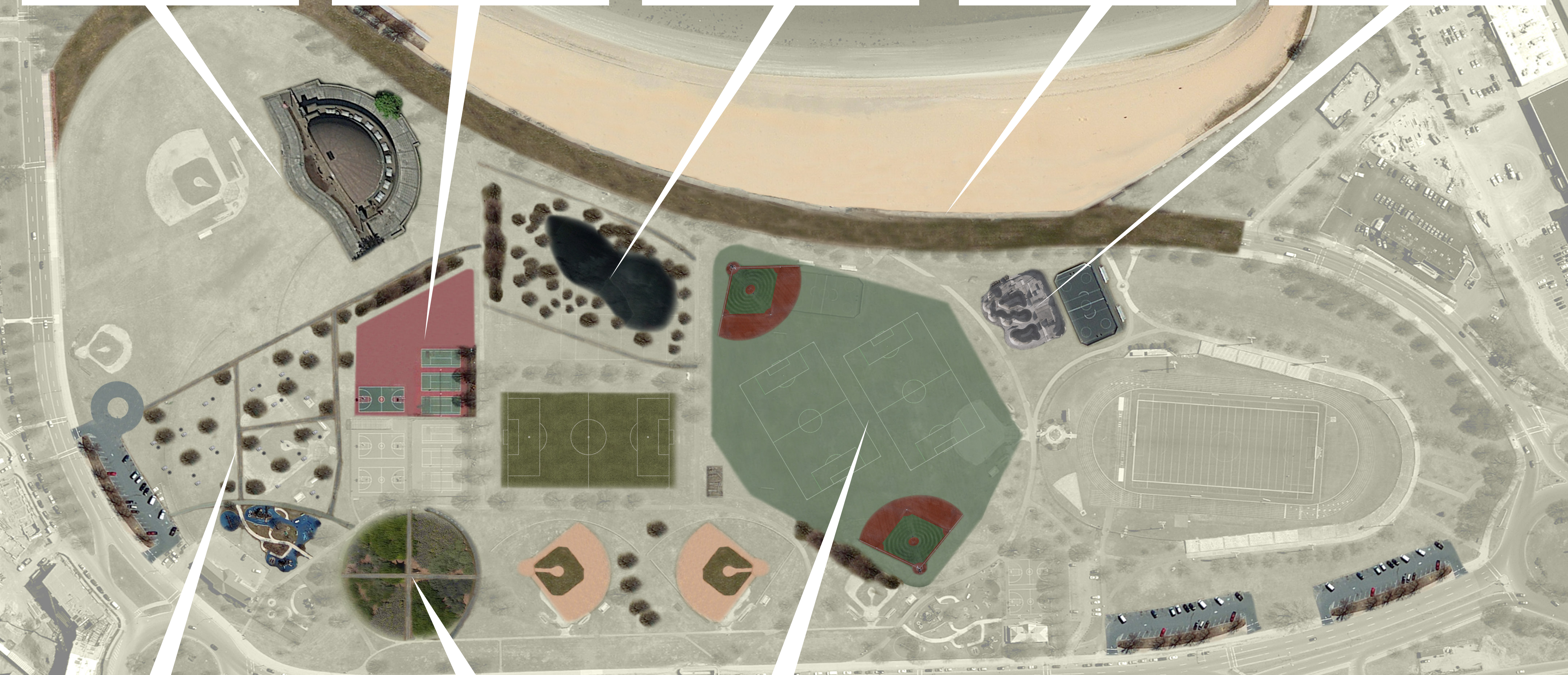
(Photos: Dune Habitee, Saint-Hilaire-de-Riez, France, Architects: THE Architectes)

Skate Park



Develop a skate park/parkour facility adjacent to a new inline skating rink. The current rink feature looks like it was an afterthought. By melding it with the parkour area, it will create a high-intensity pocket of activity near the other major active recreation assets.

(Photos: Lemvig, Denmark, Architects: EFFEKT)



Picnic Grove & Urban Orchard



Picnic tables nestled under shade provided by peach, apple and pear trees, brings new meaning to Farm-to-Table eating. (Duan Juan Li, Designer)

Community Garden



As Southie's first community garden, a special children's area can allow for the Ollie's patrons to explore and learn about where food comes from.

(T & B: Lafayette Greens Children's Garden, Detroit MI, Kenneth Weikal Landscape Architecture)

Multi-Purpose Field



Create a multi-purpose baseball/softball/rugby/soccer artificial turf field, with lights. This layout allows for a maintenance (and rain-out) free alignment of fields, and it frees up approximately 12 acres of existing baseball field space for other uses.

(Photo: West Roxbury High School)

Access Improvements



Expanding the existing parking lots and creating lined spaces will provide easier vehicle access from Columbia Road and Old Colony Avenue. Currently approx. 75 parking spaces, Proposed approx. 150.

(Showse Park, Vermilion OH)

Improvements Around Park



(L: Elkay® Water Fountain, R: Dog Waste Station by Terra Bound Solutions™, B: Bike Racks (in Allston) by artist Richard Duca)