



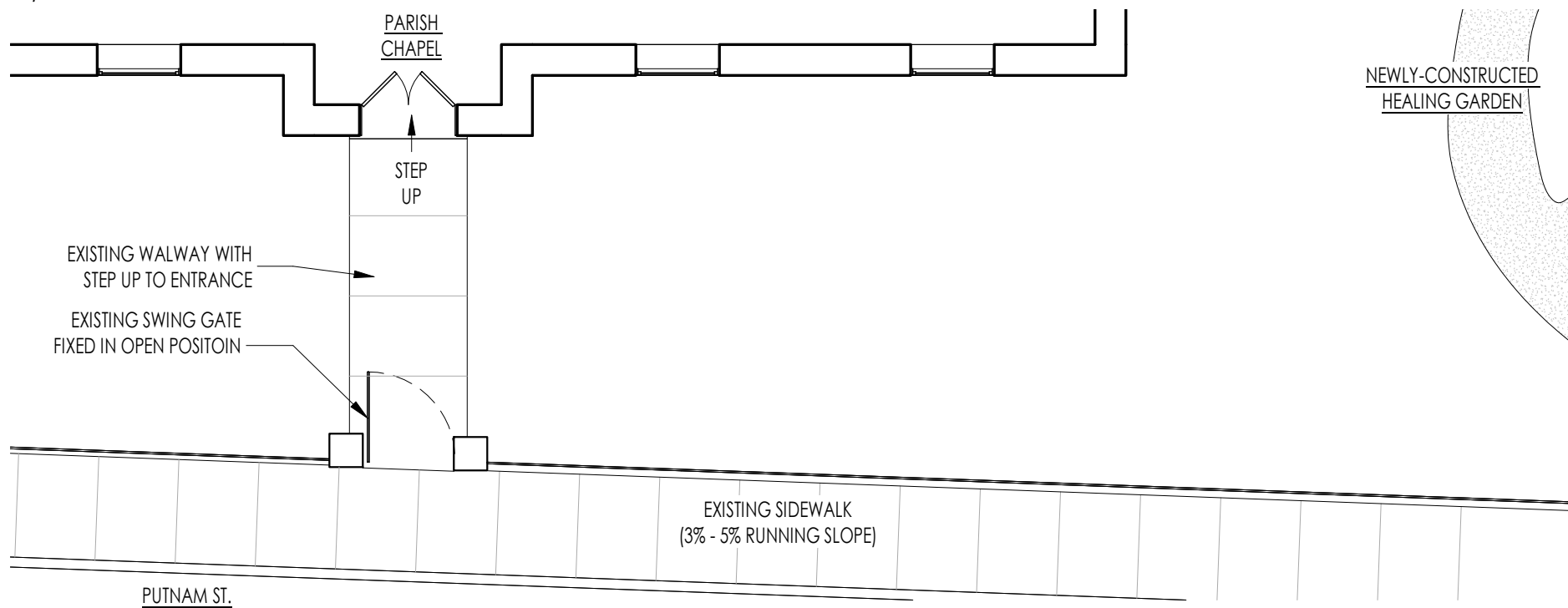
PARISH CHAPEL
ENTRANCE

EXISTING SWING GATE
FIXED IN OPEN POSITIOIN

EXISTING WALWAY WITH
STEP UP TO ENTRANCE

EXISTING CITY
SIDEWALK

2 PUTNAM ST. ENTRANCE - EXISTING ELEVATION
1/8" = 1'-0"



NEWLY-CONSTRUCTED
HEALING GARDEN

EXISTING GRADE UP TO
HEALING GARDEN

1 PUTNAM ST. ENTRANCE - EXISTING CONDITIONS
1/8" = 1'-0"



ARCHITECTURE
+ACCESSIBILITY
ONE BRIDGE ST
NEWTON MA
02458-1132
KMACCESS.COM
617.641.2802

UU Urban Ministry

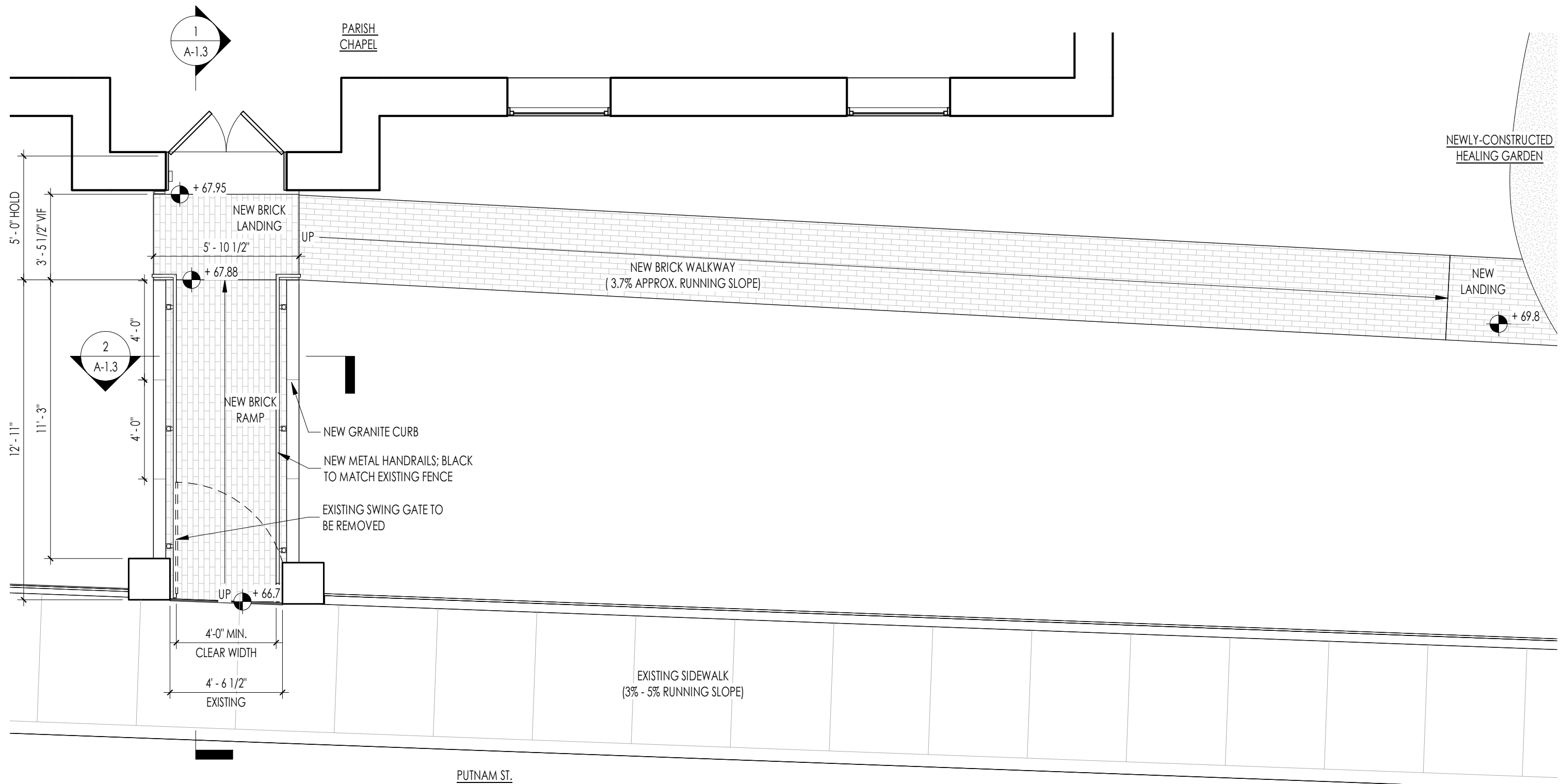
10 Putnam Street, Roxbury, MA 02119

DATE: 05.27.21

APPLICATION FOR CERTIFICATE OF APPROPRIATENESS,
BOSTON LANDMARKS COMMISSION

PUTNAM ST. ENTRANCE
EXISTING CONDITIONS

X-1.1



1 PUTNAM ST. ENTRANCE - PROPOSED LANDSCAPE PLAN
 1/4" = 1'-0"

PRELIMINARY:
 NOT FOR
 CONSTRUCTION



ARCHITECTURE
 + ACCESSIBILITY
 ONE BRIDGE ST
 NEWTON MA
 02458-1132
 KMACCESS.COM
 617.641.2802

UU Urban Ministry
 10 Putnam Street, Roxbury, MA 02119

DATE: 05.27.21
 APPLICATION FOR CERTIFICATE OF APPROPRIATENESS,
 BOSTON LANDMARKS COMMISSION

PUTNAM ST. ENTRANCE
 PROPOSED LANDSCAPE
 PLAN

A-1.1



1 PUTNAM ST. ENTRANCE - PROPOSED ELEVATION
1/4" = 1'-0"



2 PROPOSED PUTNAM ST. ENTRANCE - AXONOMETRIC



ARCHITECTURE
+ACCESSIBILITY
ONE BRIDGE ST
NEWTON MA
02458-1132
KMACCESS.COM
617.641.2802

UU Urban Ministry

10 Putnam Street, Roxbury, MA 02119

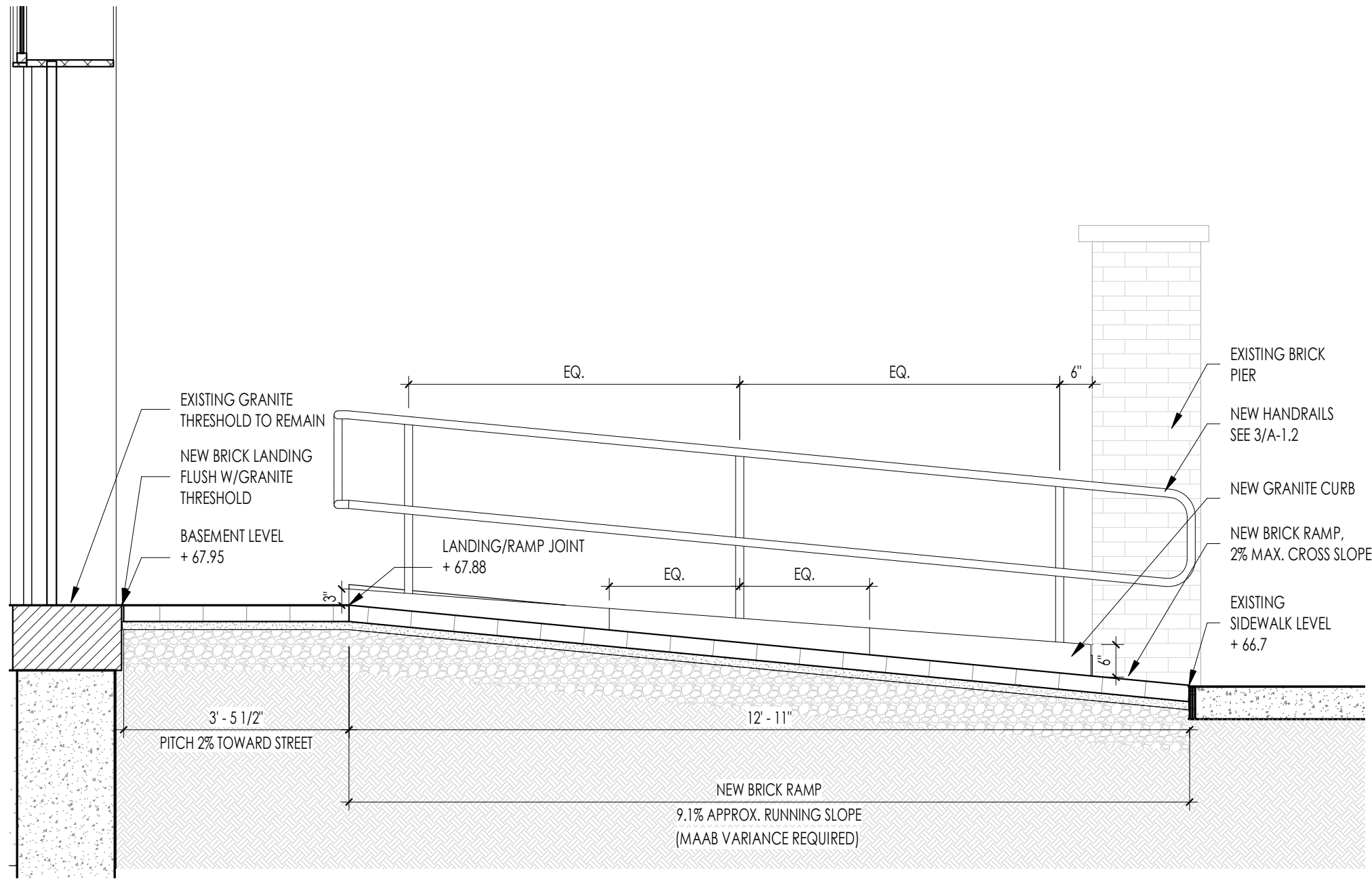
DATE: 05.27.21

APPLICATION FOR CERTIFICATE OF APPROPRIATENESS,
BOSTON LANDMARKS COMMISSION

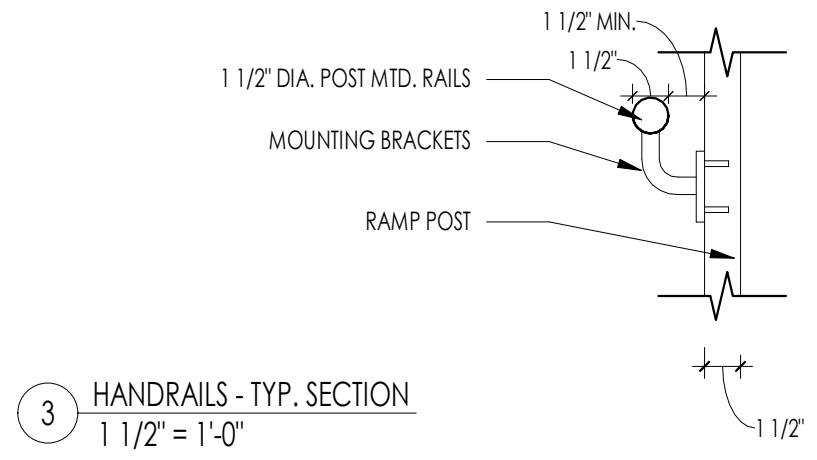
PUTNAM ST. ENTRANCE
PROPOSED ELEVATION &
AXONOMETRIC

A-1.2

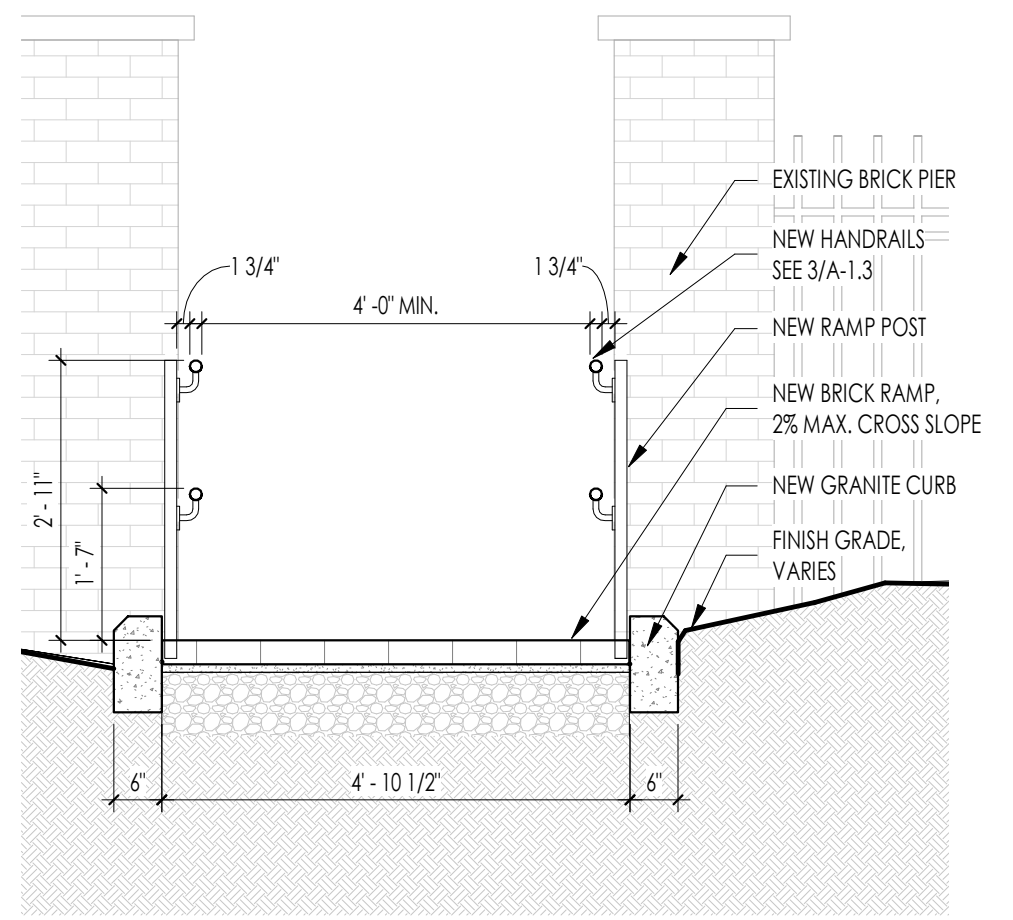
PRELIMINARY:
NOT FOR
CONSTRUCTION



1 PROPOSED LONGITUDINAL SECTION THROUGH RAMP
1/2" = 1'-0"



3 HANDRAILS - TYP. SECTION
1 1/2" = 1'-0"



2 PROPOSED CROSS SECTION THROUGH RAMP
1/2" = 1'-0"

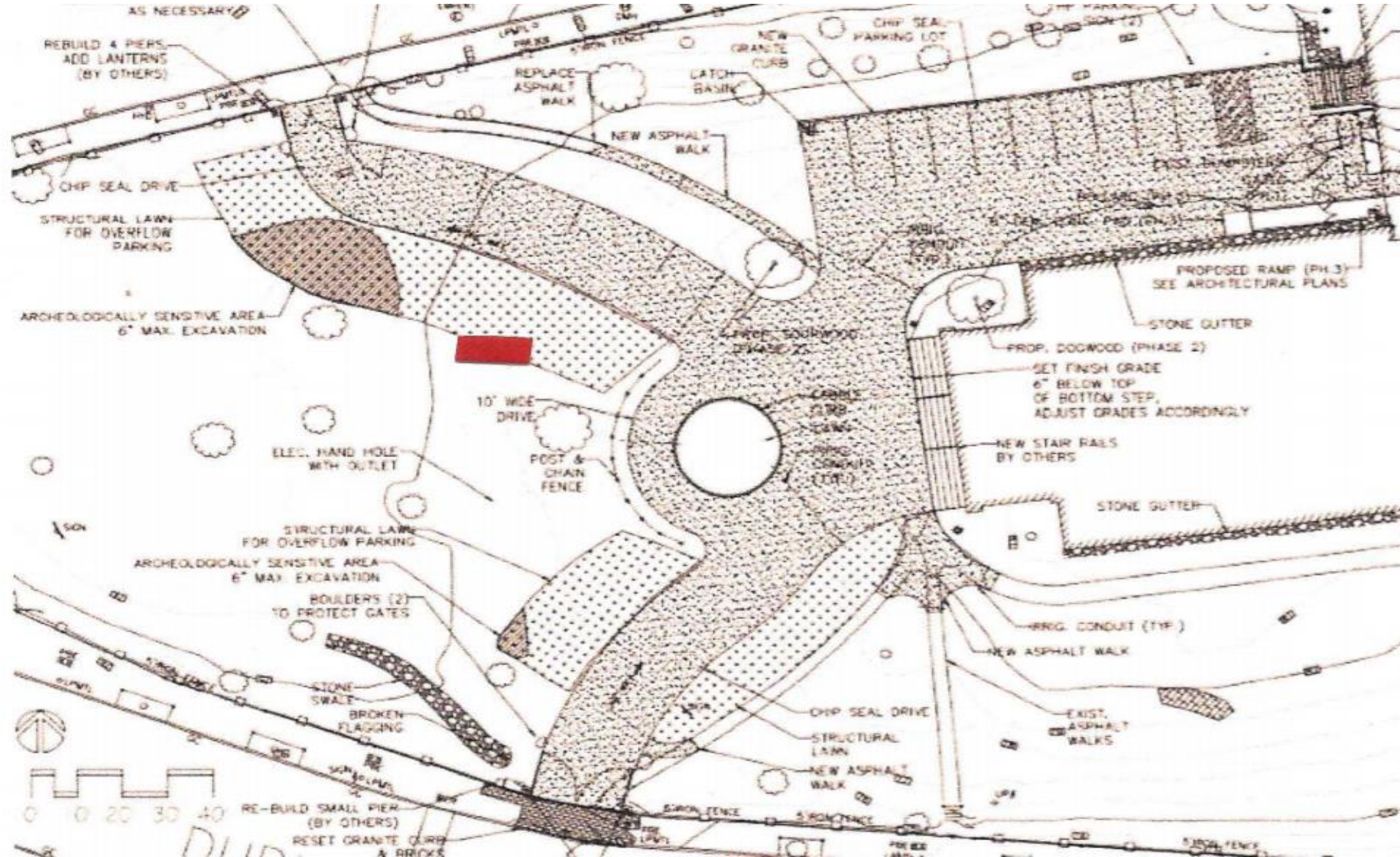
Unitarian Universalist Urban Ministry

Mimi Jones Memorial presentation to
Boston Landmarks Commission (BLC)

Memorial site details and mitigations

1. Native archaeological sites nearby shall be marked off and avoided/protected.
2. Mimi Jones Memorial bench will be located on the front lawn outside the nearest archeological site, Meeting House Hill III.
3. Dimensions of the Lemars Classic Ribbed Steel Park Bench are 96"L x 28"W x 32"H
4. Length, width and depth of the concrete slab on which the bench will be mounted and secured is 108"L x 40"W x 4"D.

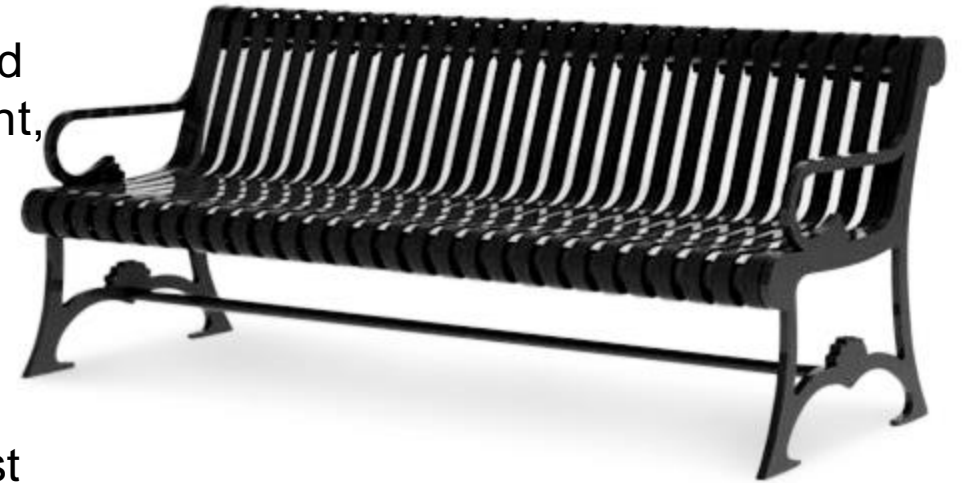
Memorial site map – bench location at red marker



Lemars Classic Ribbed Steel Park Bench

This bench was chosen following review of numerous high-quality benches by our study group. This bench complements the materials, color and period of our recently restored iron gates and was approved by Urban Ministry's historic preservation consultant, Andrea Gilmore.

- Designed for beauty and built for durability. It's made of solid heavy-duty 1" thick steel plate legs and 1-1/2" wide steel ribs.
- Highly durable powder-coated finish will protect in the harshest climates. The bench will be mounted and secured to the concrete slab using its pre-drilled mounting holes.
- Continuous weld seams penetrate the metal and ensure a weld that is virtually inseparable and rust deterrent. Protected with 7-15 mils of polyurethane powder-coating in your choice of colors shown.



Memorial Plaque

[Colonial Brass Co.](#) is now creating mock-up of a brass memorial plaque for review and approval by Urban Ministry. This will be a simple plaque that includes name, DOB/DOP and a brief and fitting epitaph. This plaque will attach to the bench itself and will require no additional mounting structures. Colonial Brass Co. has done fine work in Highland Park including the brass historical marker at Alvah Kittredge House and the Browne Fund plaque at Alvah Kittredge Park.