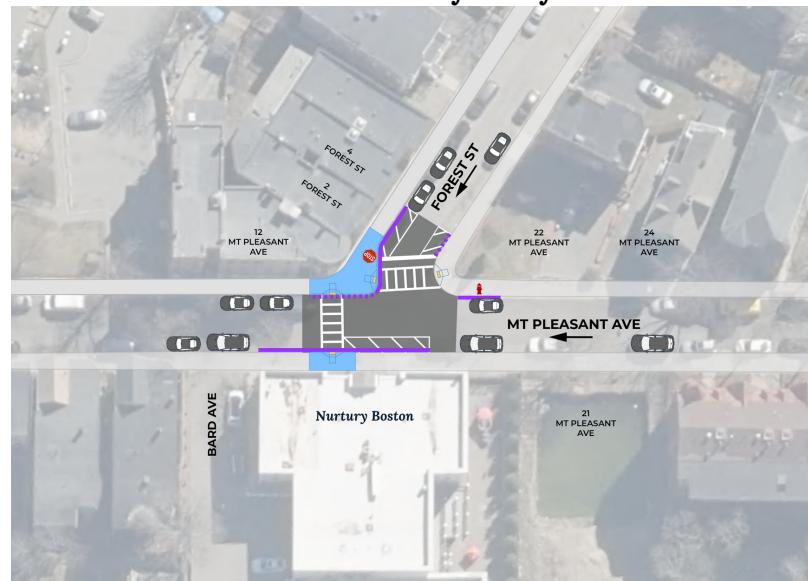


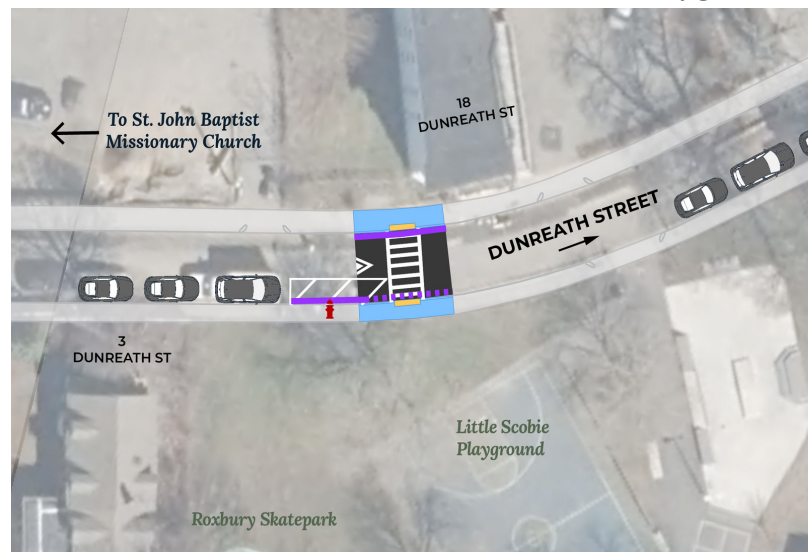
New crosswalks near Nurtury Early Education



New raised crosswalk near Mt. Pleasant Ave. Playground



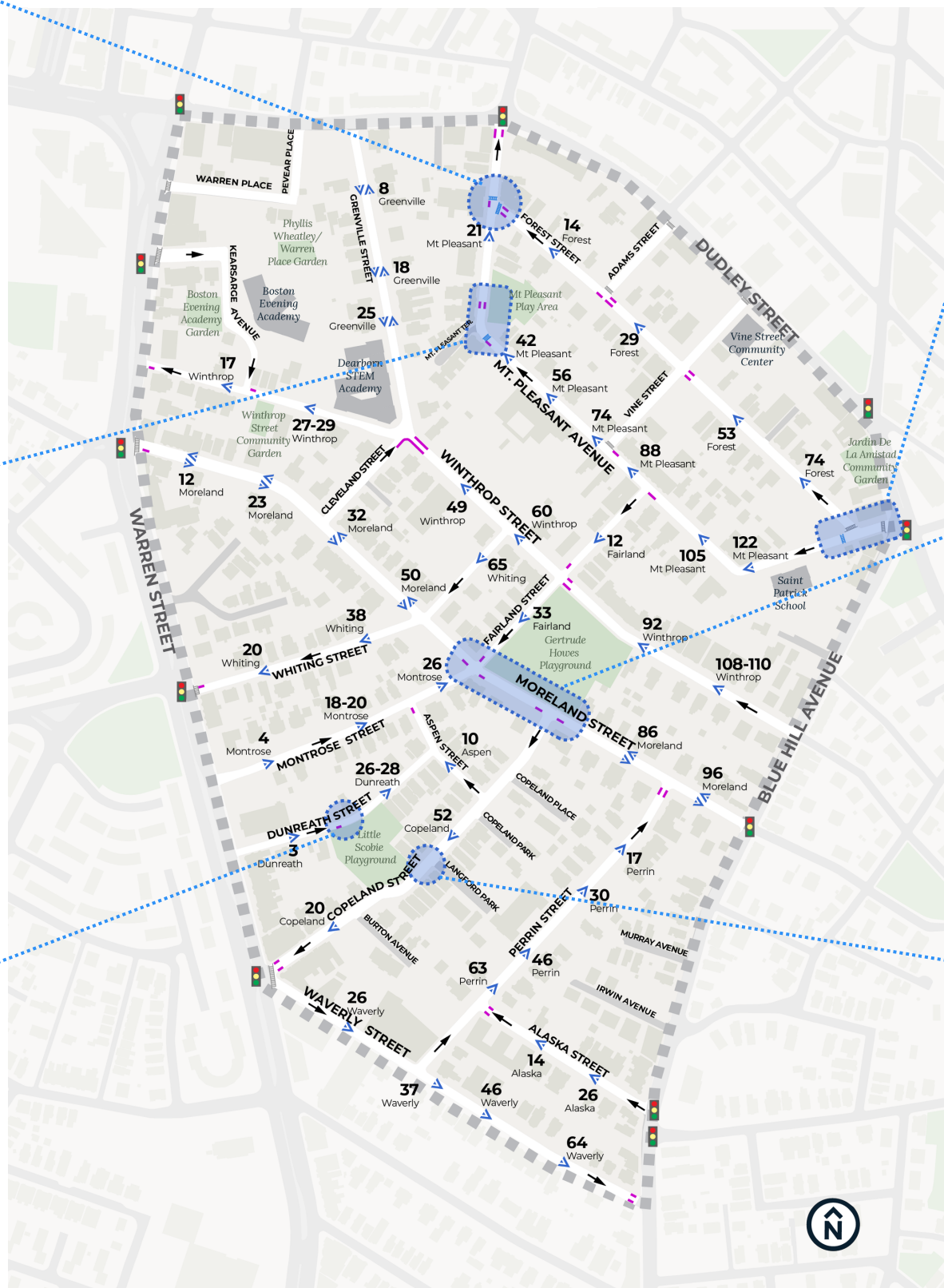
New raised crosswalk near Little Scobie Playground



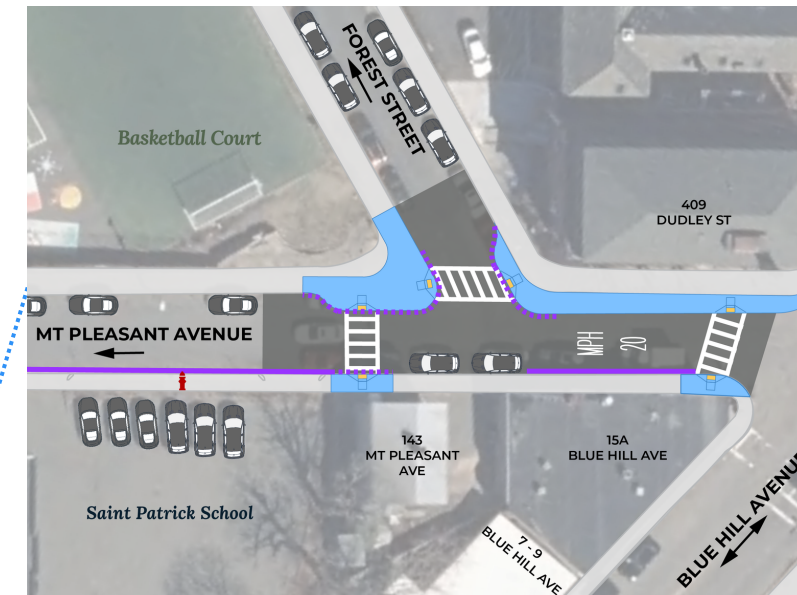
— Existing Parking Restriction
 - - - New Crosswalk Parking Restriction

**Map of proposed changes:
 Aquí están los cambios propuestos:**

- Focus Areas
- New Speed Hump (150-200 feet apart)
- New Parking Restrictions
- New Crosswalk
- Study Area
- Street Direction
- Existing Crosswalk



New crosswalks near Saint Patrick School



New crosswalk near Gertrude Howes Playground



New crosswalk near Little Scobie Playground



— Existing Parking Restriction
 - - - New Crosswalk Parking Restriction

SPEED HUMPS



A series of speed humps on some streets will reduce speeds.

En algunas calles, se construirán topes con el fin de reducir la velocidad de circulación:

Speed hump streets:

- Greenville Street
- Winthrop Street
- Forest Street
- Mount Pleasant Avenue
- Moreland Street
- Cleveland Street
- Fairland Street
- Whiting Street
- Montrose Street
- Aspen Street
- Dunreath Street
- Copeland Street
- Perrin Street
- Alaska Street
- Waverly Street

RAISED CROSSWALKS/INTERSECTIONS



Raised crosswalks are like a speed hump and crosswalk in one. Drivers have to slow down to go over a raised crosswalk.

Los cruces elevados son como una combinación de lomito de velocidad y cruce peatonal. Los conductores tienen que reducir la velocidad para pasar por un cruce elevado.

CLEAR CORNERS



Clear corners push parking away from a crosswalk or intersection. As a driver you will be able to spot people crossing from farther away.

"Clear corners" alejan el estacionamiento de un cruce peatonal o de una intersección. Como conductor, podrás ver a las personas que cruzan desde más lejos.

CURB EXTENSIONS



Curb extensions shorten the distance from one side of the street to the other.

Las extensiones de bordillo acortan la distancia entre un lado y otro de la calle.

Neighborhood Slow Streets Moreland Street and Mt. Pleasant Avenue Neighborhood



Review the Slow Streets proposed changes with us

We've heard your safety concerns and where you envision changes to your streets and worked with you to design plans to calm speeds and improve crosswalks on your streets. Talk with us about these proposed changes this summer.

Chat with us

See below to find when we'll be stationed at a street corner near you.

Revise con nosotros los cambios propuestos del proyecto "Calles Lentos"

Hemos oído sus comentarios de su seguridad y en donde quieren cambios en sus calles y trabajamos con ustedes para designar los planes para reducir la velocidad para mejorar los cruces de los peatones en sus calles. **Hable con nosotros de estos cambios este verano.**

Habla con nosotros

Averiguar cuándo estaremos estacionados en una esquina cerca de usted.

UPCOMING EVENTS EVENTOS PRÓXIMOS

1. Winthrop Street and Greenville Street

Tuesday, August 2, 4:30 - 6:00 p.m.
Martes, 2 de agosto, 4:30 - 6:00 p.m.

2. Moreland Street and Fairland Street

Tuesday, August 23, 4:30 - 6:00 p.m.
Martes, 23 de agosto, 4:30 - 6:00 p.m.

3. Mount Pleasant Avenue Playground

Tuesday, September 13, 4:30 - 6:00 p.m.
Martes, 13 de septiembre, 4:30 - 6:00 p.m.

4. Little Scobie Playground

Tuesday, September 27, 4:30 - 6:00 p.m.
Martes, 27 de septiembre, 4:30 - 6:00 p.m.

