



# 139 Appleton St.

South End Landmark Commission

May 10, 2023

## Scope of Work

Note: All restorations and replacements shall be compliant with the South End Landmark Commission Guidelines.

1. Replace existing railing to match historical railing design in the South End



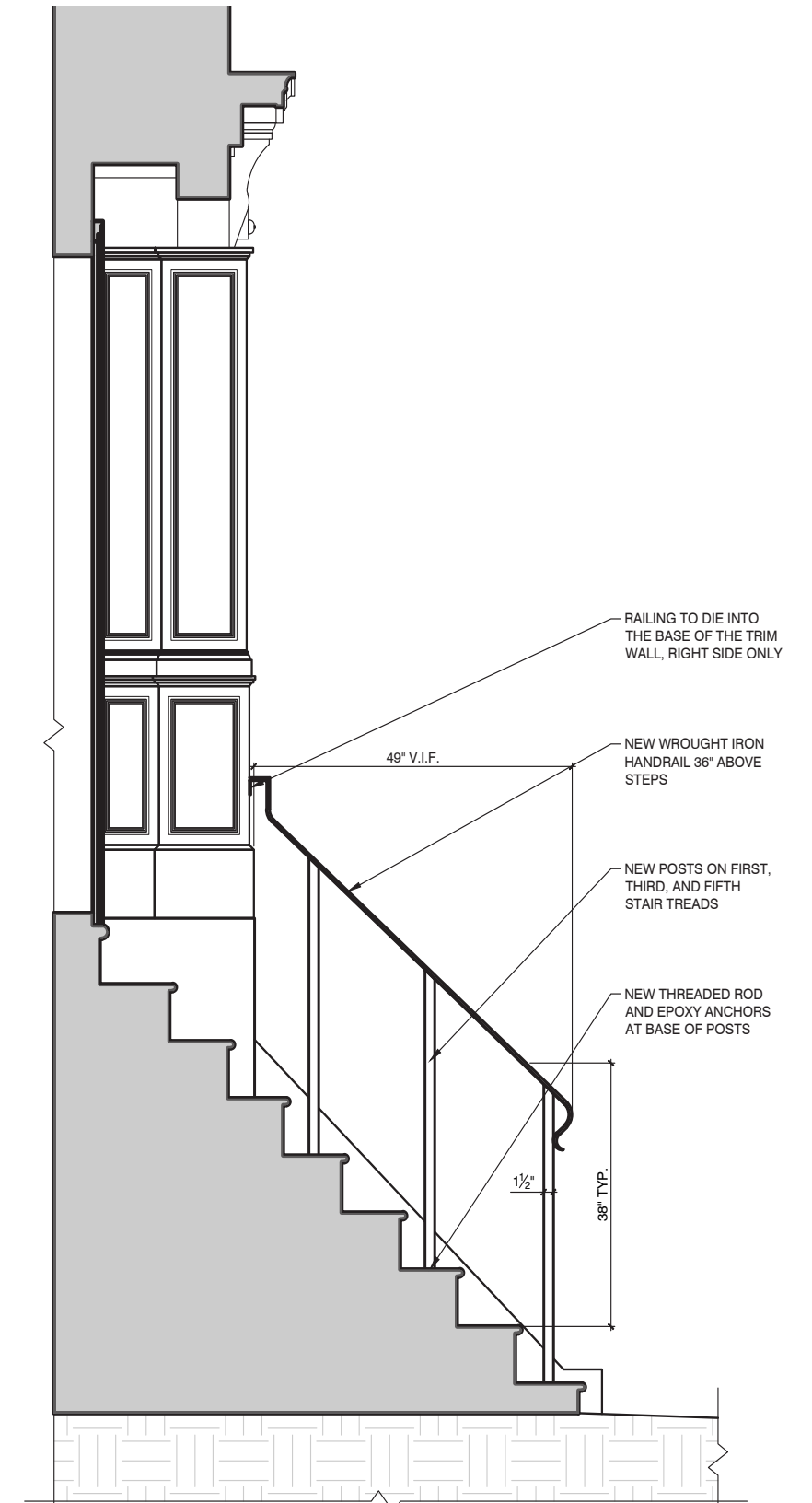
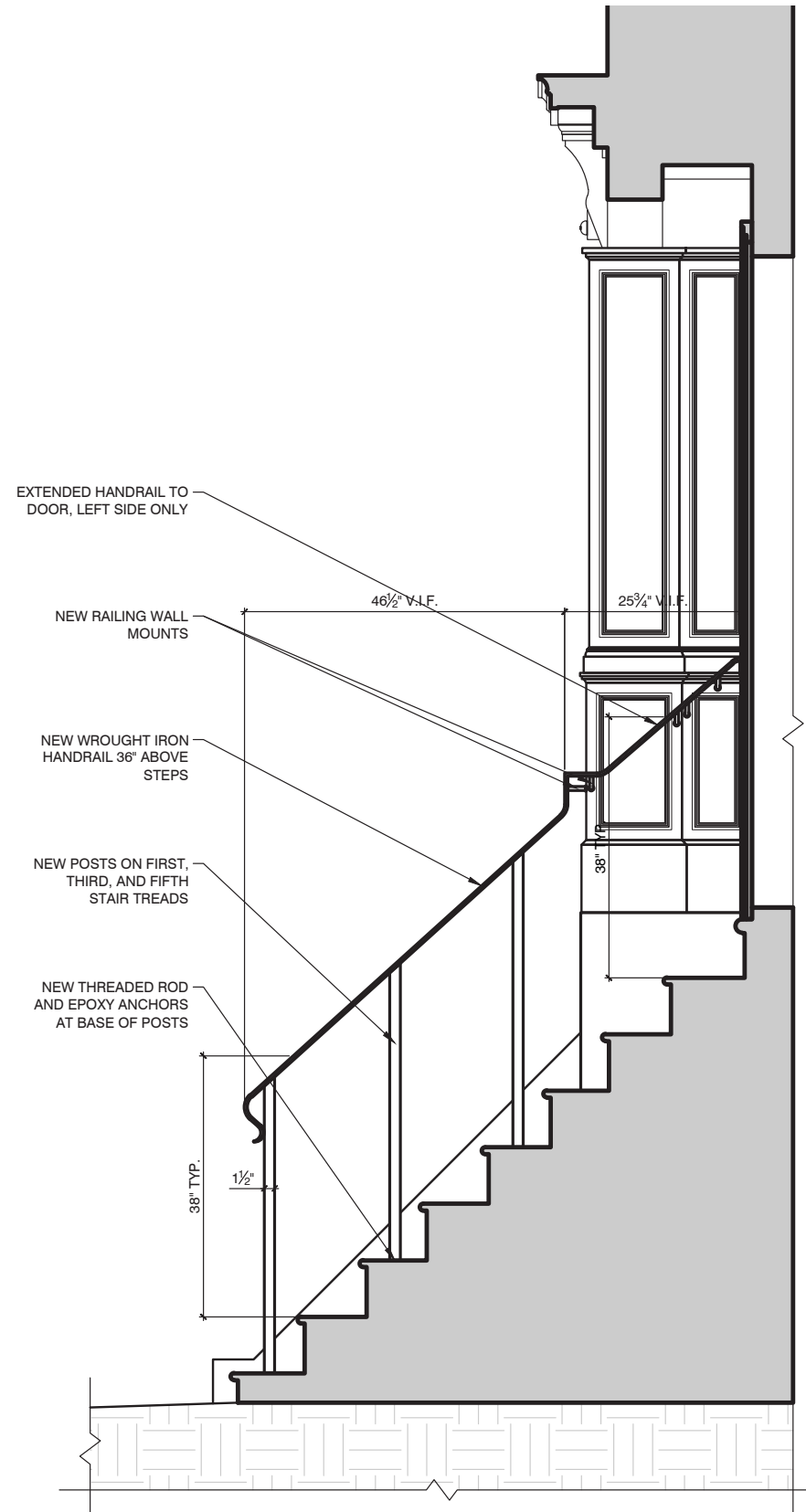
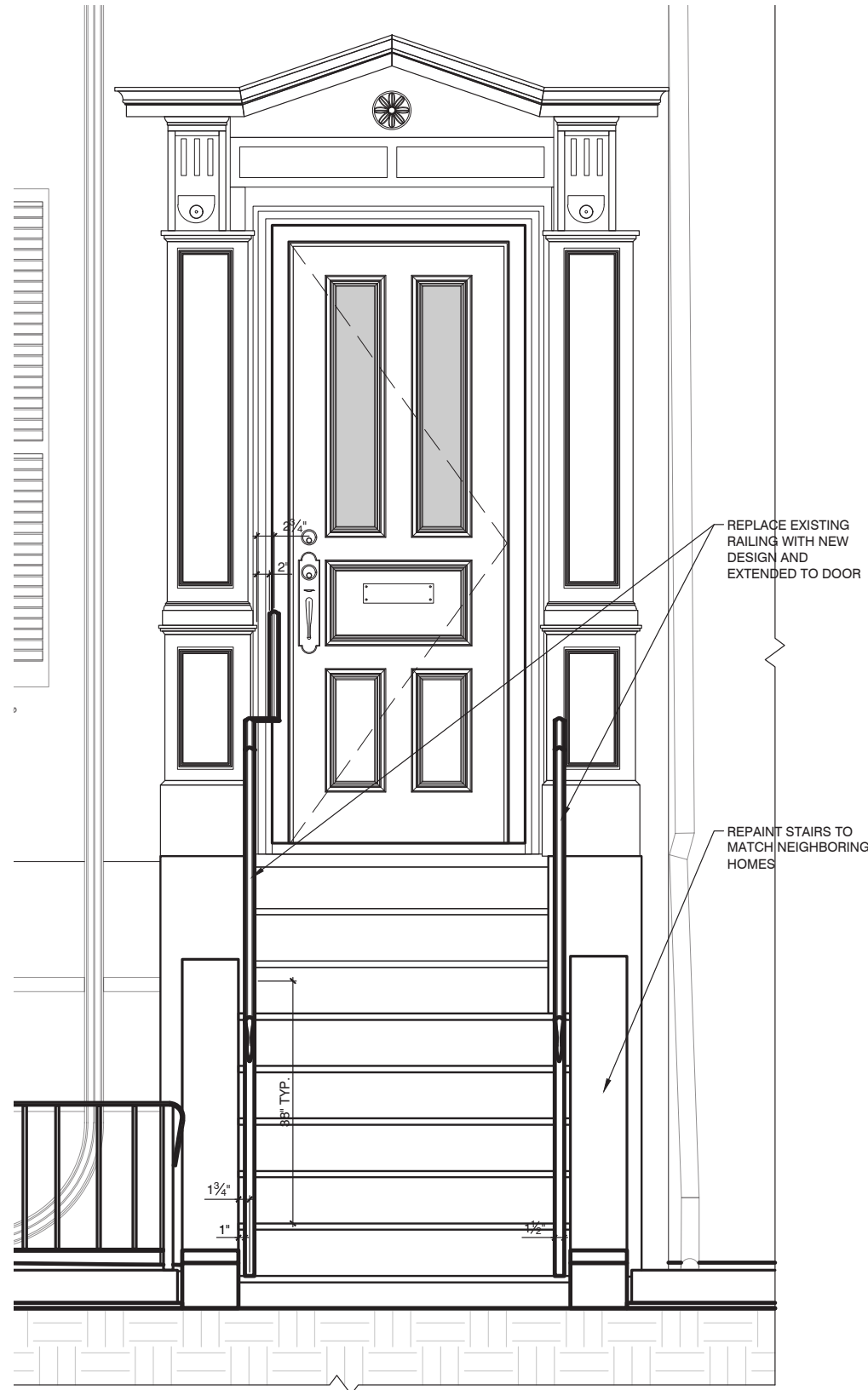


Existing Front Stairs Railing



Existing Front Stairs Railing







38 East Springfield Street



38 East Springfield Street





38 East Springfield Street



38 East Springfield Street





40 E. Springfield Street



40 E. Springfield Street

